

CAMPBELL



PATERSON

NEWSLETTER

FOR COLLECTORS OF NEW ZEALAND STAMPS

VOLUME 67 NUMBER 9, APRIL 2016 2016



TEDDY BEAR COVER

lot 166 (a)
see page 11

CP'S NEW ZEALAND STAMPS - WELCOME TO OUR TRADITION

CAMPBELL PATERSON PO Box 99988, Newmarket, Auckland 1149, New Zealand
1 Ngaire Avenue, Newmarket, Auckland 1051, New Zealand
T. 64-9-379 3086, F. 64-9-379 3087 service@campbellpaterson.co.nz
www.campbellpaterson.co.nz



New Zealand
Stamp Dealers
Association Inc.
www.nzstda.com



New Issues and Varieties

by Andrew Dolphin

What with one thing and another, we have gotten a little behind with New Zealand New Issues. So here is a catch-up of somewhat briefer entries:

IRoss Dependency Imperial Trans-Antarctic Expedition 1914-17 (4 November 2015)

Here is a set of six stamps of historical Antarctic photographs, quite similar to Ross Dependency's previous historic Antarctic sets: 2007 Commonwealth Trans-Antarctic Expedition from 1957; 2008 British Antarctic Expedition from 1907/9; and 2011 'The Race to the Pole' of 1911-12.

The set is split into two parts, each with an accompanying miniature sheet: The SY Endurance, with Capt Frank Worsley, Sir Ernest Shackleton, Tom Crean and their journey via Ocean Camp and Elephant Island to Stromness, South Georgia on the 'James Caird'.

The SY Aurora, with Capt Aeneas Mackintosh, Capt John King Davis and later Sir Ernest Shackleton again and their voyage to Ross Island.

Designed by Jonathan Gray, NZ Post, Wellington and printed by Southern Colour Print Ltd, Dunedin by offset lithography in the four process colours, perf 14½x14, on Tullis Russell 104gsm red-phosphor gummed stamp paper. Six stamps in sheets of 25 and two three-stamp miniature sheets.

RD143a-RD148a, RDM143/5, RDM146/8

2015 New Zealand Collection (25 November 2015)

Take A Closer Look – New Zealand stories in stamps-2015 is the usual hardback-book with many full-page colour photographs and further information on the year's stamps. The limited edition imperf sheetlet is Kiwi Kitchen, once more in the format top right two stamps cancelled Collectables Whanganui NZ and dated 1 July 2015 (this despite not becoming available until 25 Nov 2015) with the other sixteen imperf stamps mint.

Two surprises this year: the Treaty of Waitangi miniature sheet has had its stamp separated out of the miniature sheet and thus is in the yearbook as a single. And February's ICC Cricket World Cup 2015 self-adhesive sheetlet of 14 is not there at all – instead we have the two Cricket jumbo-roll blocks of seven on plain backing-paper. This yearbook is thus the only source of these blocks.

2016 Year of the Monkey (13 January 2016)

More of the Chinese Lunar New Year series for the Year of the Monkey beginning on 8 February 2016. Designs: 80c Pictogram; \$1.40 Paper-cut Monkey; \$2.00 The Monkey; \$2.50 Monkey Island, Western Southland.

Designed by Asiaworks, Auckland and printed by Southern Colour Print Ltd, Dunedin by offset lithography in the four process colours on Tullis Russell 104gsm red-phosphor gummed stamp paper, sheet stamps perf 14, miniature sheet stamps perf 13½. Four stamps in sheets of 25 with gutter and a four stamp miniature sheet.

S1562a-S1565a, SM1562-5, inc. S1562a(z)-S1565a(z)

Fifty Years Ago

From CP's New Zealand Bulletin - April, 1966

Understanding the Second Sidefaces 1882-1897 by Campbell Paterson

At first glance the Second Sidefaces appear formidable with numerous perforations (12x11½, 10, 10x11 and 11, to name only the common ones); with three different NZ and Star watermarks, with 6mm, 7mm and 4mm between "NZ" and the top of the "star", and with three different papers, and (in 1d and 2d) three different dies, this looks like a thorough-going headache and quite beyond the scope of ordinary mortals. Yet nothing is further from the truth – the dies, watermarks and paper are all "amenable to reason" and the perforations present no difficulty at all.

The keynote to mastery of the Second Sidefaces lies in the fact that of the common perfs. only the 12x11½ perf. contains any variations of watermark. This is the salient point and if it is kept clearly in mind, life takes on a rosier hue! It means firstly that all other common perfs. – 10, 10x11 and 11 – can be segregated as our first move and once identified as to perf. can go straight to their final home without any consideration or bother about their dies, papers or watermarks.

So – we now have 2nd Sidefaces before us that are all perf. 12x11 ½. (If any rare perfs. like 12½, and 10x12½ have been found you are lucky – put them aside for gloating over later). Of the 12x11½'s some will be of the original issue with 6mm wmk. Ignore the watermark – these are the only 2nd Sidefaces on horizontal mesh paper and that's all you need for identification. All stamps with horizontal mesh can go into safe keeping as fully identified as the earliest issue – but have another look at the faces of the 1d, 2d and 6d. In these, if the background around the head is "muddy" and blurred they are "Die I" – but if the background is clean and clear, giving a pleasant "cameo" effect they are "Die II".

We now have left stamps all perf. 12x11½ all with vertical mesh but some will have a tall watermark with 7mm between "NZ" and the top point of the Star, while others have a more squat wmk. with only 4mm between "NZ" and Star. The difference here is obvious and the watermarks show up well, but a further guide is that in the squat, "4mm" wmk. the N and the Z are usually widely spaced. This "4mm" paper is the one known as "Life Insurance" paper, (being first used for those stamps), - it has a rather greasy hard appearance and has pronounced vertical mesh.

Stamp Exhibition Dates

NZSDA Stamp Show Wellington

Chilton-St James School, 124 Waterloo Road, Lower Hutt

Saturday 21 May 2016 10am - 5pm

Sunday 22 May 2016 10am - 4pm

Christchurch 2016 Stamp & Postcard Exhibition

Addington Raceway, Christchurch

18 – 20 November 2016

"I'm a real fan of the CP Catalogue, have been for years, now I have time on my hands it is as good as ever – it is excellent for beginners, great for intermediates and a guide for specialists in their areas."

BC, Auckland (March 2016)

1893 ADVERTS STAMPS ON COVER

Due to the very nature of their collectability – stamps washed off paper to reveal adverts printed on the back – SSF adverts stamps still on original cover are not common.

Offered here a small selection:

519	(a)	DA2j 1d advert pair: bottom-right-pane 215, 216 Beechams Pills Invigorate the Nerves/Lathey Livermore, 2 Jan 1894 Rangiora to Christchurch 2 Jan 1894, light ageing	\$75
	(b)	DA2j 1d advert pair: top-left-pane 78, 90 Stop that cough Bonningtons/Gold-miners Sunlight Soap, 27 Feb 1894 Dunsandel to Christchurch 27 Feb 1894, slight tear	\$50
	(c)	DA3g 2d advert Dodgshuns Tweeds, 3 Feb 1894 Auckland to Melbourne Victoria 10 Feb 1894, small faults	\$50
	(d)	DA3g 2d advert Lathey Livermore, 26 Feb 1894 Christchurch local 27 Feb 1894	\$100
	(e)	DA4e 2½d advert: bottom-right-pane 215 Beechams Pills Invigorate the Nerves, 5 Oct 1894 Auckland to Dublin, Ireland, cover cut lower right and on reverse	\$100
	(f)	DA10e 1/- advert: Frys Cocoa fiscally used on piece with cut perfs embossed, postmarked Wellington crown 10 Oct 1894	\$75

Also available:

520	(a)	26 Oct 1893 Pahiatua New Zealand Post Office Telegraphs form No. 211 / 779; with advertising on reverse: Shaw Savill & Albion Co Ltd Royal Mail Steamers, New Zealand Express Co, Commercial Union Assurance Co, Frisco Mails, The Golden Apple Champagne Cider, etc. Fine condition	\$125
------------	------------	--	-------

1893 -1895 Second Sideways Adverts Section DA

All adverts used, unless stated otherwise. LARGE stocks held adverts positions, inc. many pairs – please request your requirements – all values

1d Rose

521	(a)	DA2j(1) 1d perf 10 1st setting in red	\$20
	(b)	DA2j(2) 1d 1st setting in red-brown	\$15
	(c)	DA2j(3) 1d 2nd/3rd setting in red-brown	\$10
	(d)	DA2j(3)(v) 1d advert doubled (Cat. \$500)	\$400
	(e)	DA2j(4) 1d 2nd/3rd setting in lilac	\$10
	(f)	DA2j(5) 1d 2nd setting in green	\$60
	(g)	DA2j(6) 1d 2nd setting in blue (Cat. \$100)	\$80
	(h)	DA2j(7) 1d 3rd setting in brown-purple	\$12
	(i)	DA2j(8) 1d 3rd setting in red	\$10
	(j)	DA2j/D2j(t) 1d advert screwdriver flaw	\$20
	(k)	DA2j(8)/D2j(t) 1d advert chisel flaw	\$20

2d Lilac

522	(a)	DA3c(5) 2d perf 12x11½ setting in red (Cat. \$120)	\$60
	(b)	DA3g(1) 2d perf 10 1st setting in red	\$22
	(c)	DA3g(2) 2d 1st setting in bright-red	\$50
	(d)	DA3g(3) 2d 1st setting in red-brown	\$30
	(e)	DA3g(4) 2d 2nd/3rd setting in red-brown	\$10
	(f)	DA3g(5) 2d 2nd setting in brown	\$12
	(g)	DA3g(6) 2d 2nd setting in green	\$35
	(h)	DA3g(7) 2d 3rd setting in red-brown	\$10
	(i)	DA3g(8) 2d 3rd setting in lilac	\$10

2½d Blue

523	(a)	DA4e(1) 2½d perf 10 2nd/3rd setting purple-red	\$32
	(b)	DA4e(2) 2½d 2nd setting in green	\$60
	(c)	DA4e(4) 2½d 2nd/3rd setting in mauve	\$35
	(d)	DA4e(1)(y) 2½d advert doubled (Cat. \$500)	\$275

3d Yellow

524	(a)	DA5d(1) 3d perf 10 2nd setting in brown	\$60
	(b)	DA5d(3) 3d 3rd setting in red	\$55
	(c)	DA5d(4) 3d 3rd setting in mauve	\$55
	(d)	DA5d(3) 3d 3rd setting in red LHM (Cat. \$340)	\$200
	(e)	DA5d(4) 3d 3rd setting in mauve LHM (Cat. \$330)	\$200

4d Green

525	(a)	DA6e(1) 4d perf 10 2nd setting in brown	\$30
	(b)	DA6e(2) 4d 3rd setting in mauve	\$30

5d olive-black

526	(a)	DA7d(1) 5d perf 10 3rd setting in mauve	\$100
	(b)	DA7d(1) 5d 3rd setting in mauve LHM (Cat. \$500)	\$225
	(c)	DA7d(y) 5d mixed perms, p.10, p.12½ (Cat. \$1000)	\$400

6d Brown

527	(a)	DA8h(1) 6d perf 10 2nd setting in brown	\$45
	(b)	DA8h(2) 6d 3rd setting in red	\$45
	(c)	DA8h(3) 6d 3rd setting in mauve	\$45

8d Blue

528	(a)	DA9c(1) 8d perf 10 3rd setting in purple	\$175
	(b)	DA9c(1) 8d 3rd setting in purple LHM (Cat. \$350)	\$130

Second Sidefaces (cont.)

1/- Red-brown

529	(a)	DA10c(2) 1/- perf 12x11½ 3rd setting in purple LHM	\$550
	(b)	DA10c(2) 1/- perf 12x11½	\$160
	(c)	DA10e(1) 1/- 2nd setting in brown	\$110
	(d)	DA10e(1) 1/- brown Creases A1 Coffee with left selvedge pane position BRP 127	\$175
	(e)	DA10e(2) 1/- 2nd setting in black (Cat. \$360)	\$300
	(f)	DA10e(3) 1/- 3rd setting in red	\$110
	(g)	DA10e(4) 1/- 3rd setting in mauve	\$110
	(h)	DA10e(5) 1/- 3rd setting in red-brown	\$110
	(i)	DA10e(5) 1/- red-brown SPECIMEN overprint unused	\$150
	(j)	DA10e(5) 1/- red-brown LHM (Cat. \$900)	\$500
	(k)	DA10e(1) 1/- brown pair TLP 54, 66 Sustain the Voice Bonningtons/ Hosiery & Gloves Strange	\$200
	(l)	DA10e(4) 1/- mauve pair TRP 116, 117 Truebridge/ Less labour Sunlight Soap	\$200
	(m)	DA10e(5) 1/- red-brown pair TLP 87, 88 Dodgshuns Tweed Warehouse/ Lochheads Perambulators	\$200
	(n)	DA10e(3) 1/- red pair TRP 83, 84 Poneke Beef Extract/Frys concentrated Cocoa fiscal usage (Bank of Australia, Dunedin)	\$50
	(o)	DA10e(5) 1/- two Beechams singles, 237 Nervous Ills, 239 Sick Headache, BRP last row, both large lower selvedge	\$75

DEFINITIVE PLATEBLOCKS & OTHER SELVEDGE PIECES 1995 – 2016 (cont.)

Part Three Scenic Definitives Section PE. All lots UHM and in CP Cat. listed sizes. All plateblocks are perf.

DISCOUNT OFFERED FROM THIS LIST FOR THE MONTH APRIL ONLY

On Total Orders Over \$250 – 10% discount

On Total Orders Over \$500 – 20% discount

763	(y)	PE5a(1) 1995 40c Mitre Peak shade (1) Original	\$13
	(z)	PE5a(2) 40c shade (2) 1-Kiwi	\$16
764	(a)	PE5a(3) 40c shade (3) 2-Kiwis SG1929a.	\$16

764	(b)	PE5a(4) 40c shade (4) 3-Kiwis	\$13
	(c)	PE5a(5) 40c shade (5) 4-Kiwis SG1929b.	\$13
	(d)	PE5b 1996 40c perf 12 Southpex sheetlet	\$20
	(e)	PE5b 40c Southpex sheetlet Used (Cat. \$25)	\$20
	(f)	PE6a 1996 50c Mt Ngauruhoe Original	\$16
	(g)	PE6a 50c 1-Kiwi	\$16
	(h)	PE6a 50c 2-Kiwis	\$16
	(i)	PE7a 1996 60c Lake Wanaka Original	\$20
	(j)	PE7a 60c 1-Kiwi	\$20
	(k)	PE8a 1996 70c Giant Kauri Original	\$23
	(l)	PE8a 70c value block of four	\$18
	(m)	PE9a 1996 80c Doubtful Sound Original	\$26
	(n)	PE9a 80c value block of four	\$20
	(o)	PE10a 1996 90c Waitomo Limestone Caves Original	\$29
	(p)	PE10a 90c value block of four	\$22
	(q)	PE18a 1997 \$10.00 Mt Ruapehu	\$100
	(r)	PE19a 2000 \$1.00 Tairaroa Head Original	\$25
	(s)	PE19a \$1.00 1-Kiwi	\$25
	(t)	PE19a \$1.00 2-Kiwis	\$25
	(u)	PE19a \$1.00 3-Kiwis	\$25
	(v)	PE19a \$1.00 4-Kiwis	\$25
	(w)	PE20a 2000 \$1.10 Kaikoura Coast Original	\$25
	(x)	PE20a \$1.10 1-Kiwi	\$25
	(y)	PE21a 2000 \$2.00 Great Barrier Island Original	\$45
	(z)	PE21a \$2.00 1-Kiwi	\$45
765	(a)	PE21a \$2.00 2-Kiwis	\$45
	(b)	PE21a \$2.00 3-Kiwis	\$45
	(c)	PE22a 2000 \$3.00 Cape Kidnappers Original	\$68
	(d)	PE22a \$3.00 1-Kiwi	\$68
	(e)	PE22a \$3.00 2-Kiwis	\$68
	(f)	PE22a \$3.00 3-Kiwis	\$68
	(g)	PE22a \$3.00 4-Kiwis	\$68
	(h)	PE23a 2000 90c Rangitoto Island Original	\$21
	(i)	PE23a 90c 1-Kiwi	\$21
	(j)	PE24a 2000 \$1.30 Lake Camp, Canterbury Original	\$30
	(k)	PE25a 2003 50c Ailsa Mountains Original	\$9
	(l)	PE25a 50c value block of four	\$8
	(m)	PE25a 50c 1-Kiwi	\$9

Definitives Plateblocks (cont.)

765	(n)	PE25a 50c 2-Kiwis	\$9
	(o)	PE25b 50c Silver value block of four	\$50
	(p)	PE26a 2003 \$1.00 Coromandel Original	\$18
	(q)	PE26a \$1.00 value block of four	\$15
	(r)	PE26a \$1.00 1-Kiwi	\$18
	(s)	PE26a \$1.00 2-Kiwis	\$18
	(t)	PE26a \$1.00 3-Kiwis	\$18
	(u)	PE27a 2003 \$1.50 Arrowtown Original	\$27
	(v)	PE27a \$1.50 value block of four	\$20
	(w)	PE27a \$1.50 1-Kiwi	\$27
	(x)	PE27a \$1.50 2-Kiwis	\$27
	(y)	PE27a \$1.50 3-Kiwis	\$27
	(z)	PE27a(z) \$1.50 4-Kiwis	\$27
766	(a)	PE27a(z) \$1.50 5-Kiwis	\$27
	(b)	PE27a(z) \$1.50 6-Kiwis	\$27
	(c)	PE27a(z) \$1.50 7-Kiwis	\$27
	(d)	PE27a(z) \$1.50 8-Kiwis	\$27
	(e)	PE27a(z) \$1.50 9-Kiwis	\$27
	(f)	PE28a 2003 \$2.00 Tongariro National Park Original	\$36
	(g)	PE28a \$2.00 value block of four	\$25
	(h)	PE28a \$2.00 1-Kiwi	\$36
	(i)	PE28a \$2.00 2-Kiwis	\$36
	(j)	PE28a \$2.00 3-Kiwis	\$36
	(k)	PE28a \$2.00 4-Kiwis	\$36
	(l)	PE28a \$2.00 5-Kiwis	\$36
	(m)	PE28a \$2.00 6-Kiwis	\$36
	(n)	PE28a \$2.00 7-Kiwis	\$30
	(o)	PE28a \$2.00 8-Kiwis	\$30
	(p)	PE29a 2003 \$5.00 Castlepoint Lighthouse Original	\$90
	(q)	PE29a \$5.00 1-Kiwi	\$90
	(r)	PE29a \$5.00 2-Kiwis	\$90
	(s)	PE30a 2004 45c Kaikoura Original	\$11
	(t)	PE30a 45c 1-Kiwi	\$11
	(u)	PE31a 2004 \$1.35 Lake Tekapo Church Original	\$31
	(v)	PE31a \$1.35 value block of four	\$24
	(w)	PE31b 2006 \$1.35 1-Kiwi	\$31
	(x)	PE32a(y) 2004 5c Raflatac sheetlet	\$15
	(y)	PE32a(z) 2004 5c Fasson sheetlet	\$70

766	(z)	PE33a 2004 \$1.50 Lake Wakatipu Original	\$27
767	(a)	PE33a \$1.50 value block of four	\$20
	(b)	PE33a \$1.50 1-Kiwi	\$27
	(c)	PE34a 2004 \$1.50 Mitre Peak, Milford Sound Original	\$27
	(d)	PE34a \$1.50 value block of four	\$20
	(e)	PE34a \$1.50 1-Kiwi	\$27
	(f)	PE35a 2004 \$1.50 Kaikoura Original	\$27
	(g)	PE35a \$1.50 value block of four	\$20
	(h)	PE36a 2004 \$1.50 Bath House Rotorua Original	\$27
	(i)	PE36a \$1.50 value block of four	\$20
	(j)	PE37a 2004 \$1.50 Pohutu Geyser Original	\$27
	(k)	PE37a \$1.50 value block of four	\$20
	(l)	PE38a 2004 \$1.50 Hawkes Bay Original	\$27
	(m)	PE38a \$1.50 value block of four	\$20
	(n)	PE39a 2006 \$1.50 Lake Wanaka Original	\$26
	(o)	PE39a \$1.50 value block of four	\$20
	(p)	PE39a \$1.50 1-Kiwi	\$26
	(q)	PE40a 2006 \$1.50 Mt Taranaki Original	\$26
	(r)	PE40a \$1.50 value block of four	\$20
	(s)	PE40a \$1.50 1-Kiwi	\$26
	(t)	PE41a 2006 \$1.50 Halfmoon Bay Original	\$26
	(u)	PE41a \$1.50 value block of four	\$20
	(v)	PE41a \$1.50 1-Kiwi	\$26
	(w)	PE42a 2006 \$1.50 Franz Josef Glacier Original	\$26
	(x)	PE42a \$1.50 value block of four	\$20
	(y)	PE42a \$1.50 1-Kiwi	\$26
	(z)	PE43a 2006 \$1.50 Huka Falls Original	\$26
768	(a)	PE43a \$1.50 value block of four	\$20
	(b)	PE43a \$1.50 1-Kiwi	\$26
	(c)	PE44a 2006 \$1.50 Cathedral Cove Original	\$26
	(d)	PE44a \$1.50 value block of four	\$20
	(e)	PE44a \$1.50 1-Kiwi	\$26
	(f)	PE45a 2007 5c Whakarewarewa Original	\$4
	(g)	PE46a 2007 10c Otago Original, 1-Kiwi, 2-Kiwi, 3-Kiwi, 4-Kiwi, 5-Kiwi, 6-Kiwi each	\$4

...to be concluded...

NEW ZEALAND HEALTH

Unique to New Zealand these Charity surcharged stamps were originally (1929 and 1930) in aid of the NZ Anti-Tuberculosis Fund, before changing in 1931 to be for the benefit of NZ Children's Health, and later the Health-Camps.

		UHM	LHM	U
450	(a) T1a 1929 Nurse	\$50	\$25	\$30
	(b) T2a 1930 Nurse	\$110	\$60	\$85
	(c) T3a 1931 Red Boy	\$400	\$200	\$200
	(d) T3b 1931 Blue Boy	\$400	\$200	\$150
	(e) T4a 1932 Hygeia	\$100	\$40	\$40
	(f) T4a(w) 1932 plate 2	\$175	\$95	\$85
	(g) T5a 1933 Pathway	\$50	\$25	\$35
	(h) T6a 1934 Crusader	\$45	\$25	\$30
	(i) T7a 1935 Keyhole	\$8	\$4	\$6
	(j) T8a 1936 Lifebuoy	\$5	\$3	\$5
	(k) T1a 1929 block of four, left or right selvedge	each UHM		\$200
	(l) T1a 1929 top right corner sheet serial number pair Q216745	UHM/LHM		\$100
	(m) T2a 1930 block of four	UHM		\$400
	(n) T2a 1930 top right corner sheet serial number single Q811726	UHM		\$135
	(o) T5a 1933 corner selvedge blocks of four, lower right or top right	each UHM		\$200
	(p) T5a 1933 selvedge block of four, left, right, top, bottom,	each UHM		\$190
	(q) T5a 1933 top right corner selvedge single part sheet serial number	UHM		\$70
	(r) T5a 1933 set of two good carmine shades	LHM		\$60
	(s) T5a(y) 1933 left selvedge single R2/1 Health retouch and clouds flaw	UHM		\$130
	(t) T5a(x) 1933 left selvedge single R2/1 Health retouch and clouds retouch	UHM		\$130
	(u) T5a(w) 1933 top selvedge single R1/4 clouds flaws	UHM		\$130
	(v) T5a(w) 1933 single R3/3 clouds flaws	UHM U		\$130 \$50
	(w) T5a(v) 1933 single R3/3 clouds retouches	UHM U		\$130 \$50
450	(x) T6a 1934 corner selvedge blocks of four, top left, top right,	UHM each		\$180

450	(y)	T6a 1934 selvedge block of four, left, top, bottom,	UHM each	\$165
	(z)	T7a 1935 corner selvedge blocks of four, top right, bottom right,	UHM each	\$40
451	(a)	T7a 1935 selvedge block of four, top, left,	UHM each	\$32
	(b)	T7a 1935 lower right corner plate 1 block of four, some toning	LHM (Cat. \$75)	\$25
	(c)	T7a 1935 block of four	Used	\$60
	(d)	T8a 1936 corner selvedge blocks of four, top left, lower right,	UHM each	\$25
	(e)	T8a(z) 1936 set of three plate 2 reentries, R7/3, R8/3 UHM, R6/3	LHM (Cat. \$135)	\$75
	(f)	T8a 1936 lower left corner plate 1 block of four	UHM	\$64
	(g)	T8a 1936 lower right corner plate 1 pair	UHM	\$35
	(h)	T8a 1936 top right corner plate 2 block of four, slight marks	M	\$45
	(i)	T8a 1936 lower right corner plate 2 pair	UHM	\$35
	(j)	T8a 1936 block of four	Used	\$40
	(k)	T9a 1937 Hiker lower right corner selvedge block of four,	UHM	\$35
	(l)	T9a 1937 lower left corner plate 1 block of four	UHM	\$55
	(m)	T9a 1937 top right corner plate 1 block of four, damage one stamp	UHM	\$25
	(n)	T9a 1937 lower right corner plate 2 pair	UHM	\$30
	(o)	T9a 1937 lower left corner plate 2 single toning		\$5
	(p)	T10a 1938 Children, Bradbury Wilkinson imprint block	UHM	\$55
	(q)	T10a 1938 right selvedge plate H1	UHM	\$50
	(r)	T10a 1938 left selvedge plate H1	UHM	\$55
	(s)	T10a 1938 set of three singles, sheet 01028, 12909 UHM, plate H1 right	Used	\$25

TEDDY BEAR COVER

All New Zealand philatelists will know of the 1996 Health Teddy Bear stamps. Some fortunate few might own one for their own stamp collections. And, yes, they used to occasionally turn up unnoticed in kiloware lots but to see one used on complete cover of the period is rare indeed.

Thus CP Newsletter this month is delighted to offer:

- 166 (a)** T68a(z) 1996 Health Teddy Bear used on cover, dated June 1996, Auckland (Cat. \$7000). This is a top selvedge copy of T68a, postmarked Auckland 18 June 1996, on a printed Reader's Digest, Auckland envelope.
Fine and Rare.

\$4500

1935 PICTORIALS INVERTED WATERMARK USED BLOCK

425	(a) L6a(z) 1935 3d Maori Girl watermark inverted (W.7c) (SG561w.) in a well-centred fine commercially used block of four, lightly postmarked, with small tone patch on lower pair. Used inverted watermarks in the Second Pictorials are getting increasingly difficult; this used block of four of the 3d is thus a particularly nice item (Cat. \$4000) Block of four	\$2750
	Also just purchased:	
	(b) L10a 1935 8d Tuatara plate A2 plateblock of four UHM (Cat. \$450) UHM	\$375
	(c) L4b(3) 1936 2d Whare left selvage block of four in brown-orange shade fine UHM (Cat. \$1600) Block of four UHM	\$1250

NEW ZEALAND POSTAL HISTORY 1858 – 2007

Our CP Newsletter Postal History lists are always so well received, probably due to the amazing variety of covers offered. They are exceedingly popular and are often complete sell-outs. This month is no exception.

800	(a) 1858 June 7 Wellington to Wanganui. Backstamp Wellington 7 June 1858, on front arrival postmark Petre 9 June 1858, plus handstruck '2' in black and endorsed 'Per Overland'. Has horizontal filing-crease, away from markings on front	\$500
	(b) 1868 June 2 Dunedin to Dublin, Ireland, franked A5h 6d red-brown FFQ perf 12½, endorsed 'via Panama'. Front cancel Dunedin O duplex, backstamp H&K Packet 29 July 1868. This was for the City of Dublin Steam Packet Service. Has much writing by recipient on front indicating reply sent via Marseilles. Slight toning	\$300
	(c) 1888 Christchurch to Lincoln, England. Large piece wrapper franked D2c 1d SSF, pair D3b 2d SSF, endorsed 'Per RMS Rimutaka'	\$100
	(d) 1891 Destination mail: cover franked GB ½d Jubilee orange, pair 1d lilac, postmarked Cavan, Ireland 8 Aug 1891 126 duplex to Christchurch, Unclaimed, Not Found, manuscript: "not Nelson", "try Christchurch again". On reverse manuscript: "Not known by Bishop Grimes" or "by Bishop Harker" or "by Bishop Julius" and red 15 rung lettercarriers ladder handstamp, Dead Letter Office 24 Feb 1892 and others. Slight toning but most interesting item	\$100
	(e) 1900 Oct 3 Gisborne to Wellington via Napier RPO 4 Oct 1900 on yellow 1d brown postcard A Refresher Newtown Park, Boer War Samuel AA.10a(b)	\$100
	(f) 1901 Jan 1 G1a 1d Universal London FDC on plain envelope Waihao Downs postmark (Cat. \$350)	\$250
	(g) 1901 1d brown postcard Humbug Reach Taieri River Samuel AA.12a(e) mint unused. Lovely	\$150
	(h) 1901 Feb 21 Riversdale to Gore, received 21 Feb 1901 on 1d brown postcard Breakfast in Camp, Boer War Samuel AA.10b(d)	\$50
	(i) 1903 May 22 Stanley Brook to Christchurch via Nelson 22 May 1903 to Christchurch 25 May 1903 on 1d brown postcard Cashel Street Christchurch Samuel AA.12a(j)	\$150

800 (j) 1907 Sept 23 Wellington to Constantinople, Turkey, franked E4b 1½d Boer War, G10f 1d Universal right selvage on neat clean, good destination cover

\$250

(k) 1907 Destination mail: cover franked GB KEVII 2½d blue, postmarked Poplar East London 8 Oct 1907 to RMS Tongariro, Tenerife, readdressed to Wellington, received 12 Dec 1907, via Auckland 27 Nov 1907. Cachet TOO LATE FOR SHIP, Unclaimed, Dead Letter Office 6 Feb 1908 and several others. Faults and tonespots but a much travelled unusual routing cover

\$60

...continued on page 14...



800(f)



529(a)



529(d)



529(e)



529(k)



529(n)



529(l)



529(m)



425(a)



425(b)



425(c)

New Zealand Postal History (cont.)

800	(l)	1914 April 13 S5a ½d Auckland Exhibition 1913 Darfield to Parnassus received 13 April 1914 on postcard Holiday Belles Make the most of your Holidays. You can only be young once! Nice postcard	\$80
	(m)	1918 Oct 11 J1a 1d Dominion on large piece wrapper Wellington local item to soldier NZMC 23rd Reinforcements, manuscript: 'Brocton'	\$100
	(n)	1922 Aug 22 K19a 3d KGV, S11a 1½d Victory on piece parcel-label tag Auckland East to Hamilton	\$25
	(o)	1925 Nov 27 S17b 1d Dunedin Exhibition Dunedin Exhibition slogan postmark to Masterton	\$50
	(p)	1930 K12b KGV 1/- AK Auckland parcel cancel to Utiku on WR Twigg Ltd, Auckland parcel mail-tag	\$100
	(q)	1933 Nov 8 T5a Health Pathway FDC Gisborne to Christchurch plain cover, light vertical crease, minor ageing (Cat. \$350)	\$175
	(r)	1936 April 27 S19a ½d Anzac top right corner plate 1 selvage pair Wellington local FDC, backstamp Wellington Delivery 27 April 1936. Neat cover	\$25
	(s)	1936 May 22 U1b 6d Express, pair V8a 1d Air, plus By Air Mail label, EXPRESS label, Dunedin to Christchurch (Cat. \$400)	\$250
	(t)	1936 Oct 1 S23a 4d Chamber of Commerce illustrated FDC Christchurch local item GH Wood cover	\$40
	(u)	1937 Oct 1 T9a Health Hiker unaddressed illustrated Taranaki Philatelic Society FDC, Jones H37.1M(2), Waitara	\$100
	(v)	1937 Dec 28 2 x L4b 2d Whare plate 1A and plate 1B singles, T7a 1935 Health Keyhole, T8a 1936 Health Lifebuoy Auckland to Havelock North, cachet NZ-USA First AirMail December 1937, backstamp PagoPago Samoa 1 Jan 1938, Havelock North 22 Jan 1938	\$50
	(w)	1937 Dec 28 L12b 1/- Tui, L13c 2/- Capt Cook Auckland to Honolulu Hawaii, cachet First AirMail Flight PanAm Airways New Zealand to Hawaii, backstamp Honolulu 3 Jan 1938	\$150
	(x)	1938 May 31 L4b 2d Whare, S25a 1d Coronation, T1a 1929 Health Nurse Stratford to Switzerland, slight ageing	\$75
	(y)	1939 Aug 16 U2a 6d Express FDC, Nelson, plain cover Unaddressed! Small toning (Cat. \$750)	\$375
	(z)	1940 April 23 S34a 6d 'Dunedin', S38a 1/- Tane Mahuta on illustrated AirMail cover Port Ahuriri to Kilmarnock, Scotland, cachet NZ-Australia-England through AirMail service, censor-tape: Opened and passed by Censor in New Zealand tape, Passed by Censor NZ 34 cachet, on reverse gold Cinderella Souvenir NZ Centennial Exhibition 1939-40, cover small faults	\$100
801	(a)	1941 July 10 M02c KGV 1d green Official FDC Wellington local, clean and tidy FDC (Cat. \$200)	\$150
	(b)	1942 Jan 12 L9c 6d Harvesting on illustrated commemorative Registered cover Wellington to London, Opened by Censor in New Zealand tape, Passed by Censor NZ 27 cachet, on reverse NZ Government Tourist Offices 'Wonderland' Cinderella	\$50
	(c)	1943 March 30 L4f 2d Whare, M2d 1d green on Airmail cover The Delta Military Camp to Napier inc. two letters. Scarce postmark	\$150
	(d)	1943 May 13 L11e 9d Maori Panel, L14g 3/- Mt Egmont on long censored Airmail commercial envelope Wellington to Chicago USA, Opened by Examiner DDA/33 tape	\$100
	(e)	1943 Oct 1 T15a/b Health triangulars illustrated FDC, U2a 6d Express, Registered Ross local item, Ross 159 R label	\$150

801	(f)	1944 Two unused Health FDC illustrated envelopes Jones H44.1AB(2), both with differing misplaced designs. Unusual and interesting	\$150
	(g)	1934-1959 study on leaves, five pages of Health slogan postmarks: 17 stamps & 8 covers all with Buy Health Stamps for Health Camps or Give Children Health Use Health Stamps slogans, inc. 1939 Nov 16 cover L4b 2d Whare Auckland to St Lucia, backstamp Castries 10 Jan 1940 Nice collection	\$120
	(h)	1946 Sept 6 long Airmail envelope L13g(r) 2/- Capt Cook reentry, pair S41a 1½d Peace, S49a 1/- Peace, Z30d 1/3d Arms Auckland FMB to Ipswich, England	\$100
	(i)	1953 Dec 9 M6b KGVI 2d yellow-orange on postcard Ferry Road local item, plus tied to front of HM Queen Elizabeth II postcard S64a 3d Royal Visit stamp: fine early firstday 'maxicard'	\$50
	(j)	1953 Dec 16 M6b KGVI 2d yellow-orange on postcard Ferry Road to Christchurch, plus tied to front of HM Queen Elizabeth II postcard N3a 1½d QEII def: fine early 'maxicard'	\$50
	(k)	1954 March 1 N1a-N16a QEII ½d-10/- (14v) illustrated FDC Registered Epsom local item (Cat. \$160)	\$75
	(l)	1954 March 1 N16a 10/- QEII on illustrated FDC Adelaide Road to Wellington (Cat. \$70) Neat FDC	\$50
	(m)	1956 May 1 N34a 3d QEII FDC Wellington local item, Scarce FDC (Cat. \$300)	\$250
	(n)	1958 Jan 6 N40a 2d overprint QEII illustrated FDC Wellington local item (Cat. \$200)	\$175
	(o)	1958 Feb 3 N35a 4d QEII FDC Wellington local item, Scarce FDC (Cat. \$250)	\$175
	(p)	1958 July 24 N024a 3x 3d, N027a 1/- QEII Official on long Airmail envelope Wellington Airmail to Beaulieu Invernessshire Scotland, from Government House, minor creasing	\$50
	(q)	1959 Oct 1 N028a 6d overprint QEII Official FDC Parliament Buildings to Christchurch	\$30
	(r)	1963 March 1 N035a, N039a 2½d, 3/- QEII Officials illustrated FDC Hamilton local item (Cat. \$225)	\$90
	(s)	1963 Nov 25 S90/91a Railways set in blocks of four on illustrated FDC Hamilton local item, fine cover	\$30
	(t)	1967 July 10 RD8a/11a 2c-15c set on illustrated FDC Registered Scott Base Ross Dependency to New Plymouth, cover has light vertical crease at left (Cat. \$200)	\$100
	(u)	1984 Oct 18 Framas trial 35c x3, PB10b 40c Apples on Registered cover Auckland to Paihia Bay of Islands	\$75
	(v)	1995 Singapore'95 souvenir folder from Southern Colour Print with cinderellas Southern Colour Print Dunedin New Zealand postage stamp and security printers x3 stamps + miniature sheet	\$60
	(w)	1997 Jan 24 Stampex Tauranga97 M/S overprint on 1996 Health miniature sheet o/p FDC	\$90
	(x)	2002 Dec 31 Best Of 2002 set of three M/S Stamp Points on 3 x FDC	\$250
	(y)	2005 Nov 17 NZ 2005 National Stamp Show M/S overprint on Year of the Rooster miniature sheet o/p FDC [also available Mint M/S o/p \$15; Used M/S o/p \$20]	\$20
	(z)	2007 Dec 31 Best Of 2007 set of three M/S Stamp Points on 3 x FDC	\$200



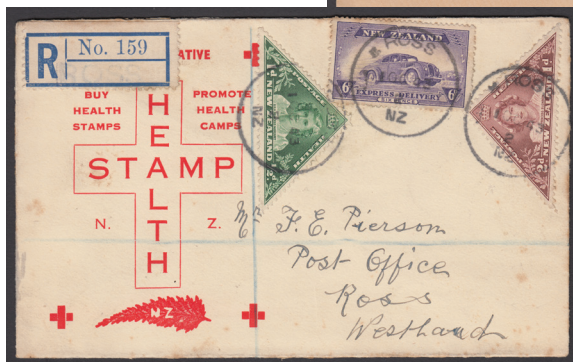
800(a)



800(y)



800(j)



801(e)

The CP Newsletter is a confidential source of information for philatelists and collectors. Published by Campbell Paterson, Auckland New Zealand. ISSN 1172-0166

All lots offered in this newsletter are unconditionally guaranteed as genuine and as described. They are offered subject unsold and will be sent on approval to known clients, Postage is additional. GST not included (NZ only).

The information contained in this newsletter is private to subscribers and unauthorised reproduction is expressly forbidden.

Postal orders to **PO Box 99988, Newmarket, Auckland 1149, New Zealand.**

To obtain more detailed descriptions of the material offered in this newsletter or to place orders, phone us **0800 755 557** or Fax **64-9-379 3087** or Email: **service@campbellpaterson.co.nz**

Our website is: **www.campbellpaterson.co.nz** Overseas clients phone (toll free) UK: **0500-893 975**

