

CAMPBELL

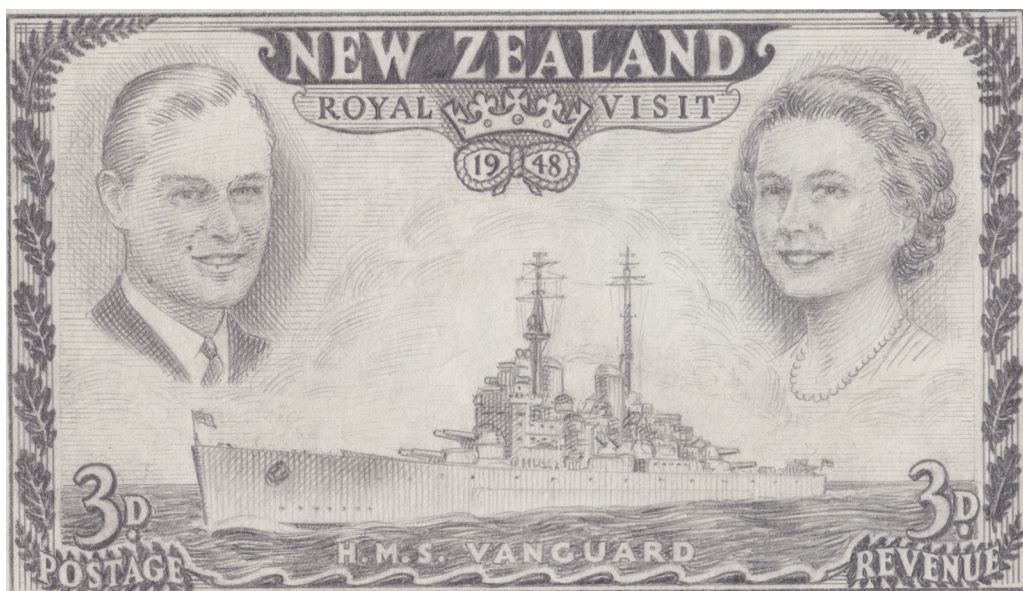


PATERSON

NEWSLETTER

FOR COLLECTORS OF NEW ZEALAND STAMPS

VOLUME 67 NUMBER 11, JUNE 2016



1(a)

James Berry 1948 Royal Visit Original Drawing
lot 1(a) page 8

CP'S NEW ZEALAND STAMPS - WELCOME TO OUR TRADITION

CAMPBELL PATERSON PO Box 99988, Newmarket, Auckland 1149, New Zealand

1 Ngaire Avenue, Newmarket, Auckland 1051, New Zealand

T. 64-9-379 3086, F. 64-9-379 3087 service@campbellpaterson.co.nz

www.campbellpaterson.co.nz



New Zealand
Stamp Dealers
Association Inc.
www.nzstda.com



New Issue Notes by Andrew Dolphin

NZ RSA 100 Years of Service 1916-2016 (3 February 2016)

The abbreviation 'RSA' stands for Royal New Zealand Returned and Services' Association and is one of NZ's largest organisations. This is an attractive six stamp set commemorating the formation of this service organisation established by wounded soldiers returning to New Zealand from World War I. The stamps incorporate the new RSA 'heart' logo (enlarged on the miniature sheet) and portray the RSA's identity and history.

80c: The returned- Capt Donald Simson at the foundation meeting, Wellington, 28 April 1916

\$1.40: The poppy- the RSA's first Poppy Day was on 24 April 1922. The now annual Poppy Day Appeal leads up to Anzac Day on 25 April.

\$2.00: Supporting those who served- advocacy and support services assisting the veteran and ex-service community

\$2.20: At the RSA- clubrooms and community facilities

\$2.50: The badge- the distinctive RSA badge

\$3.00: We will remember them- Remembrance plays a special part in the life of the RSA

As readers of these columns will know I am not usually a fan of miniature sheets, this RSA one however works rather well with the six individual stamps coming together nicely in a block of six. Also available is a presentation pack and it is good to see that \$1 from the sale of each pack is donated to the RSA.

Designed by Richard Payne, New Zealand Post, Wellington and printed by Southern Colour Print Ltd, Dunedin by offset lithography in the four process colours, perf 14½, on Tullis Russell 104gsm red-phosphor gummed stamp paper; six stamps in sheets of 25 and a six-stamp miniature sheet.

S1566a-S1571a, SM1566-71

Commonwealth Secretariat sheetlet (27 November 2015)

This is a large and very colourful sheetlet marking the 50th anniversary of the Commonwealth Secretariat 1965-2015 and the role of HM The Queen as Head of the Commonwealth. If anything could be described as a philatelic souvenir this is it because the sheetlet contains 27 different stamps from 27 different Commonwealth countries from Antigua to Zambia. New Zealand's contribution is S1555a HM The Queen Longest Reigning Monarch 1950s 80c stamp. This stamp was originally printed by Southern Colour Print Ltd, Dunedin perf 14½; this sheetlet stamp is printed by Bdt International Security Printing Ltd, Dublin, Ireland perf 13½. The NZ stamp is postally valid within New Zealand (which is why we are mentioning this at all) but the item will (obviously) only be footnoted in the CP Catalogue. The sheetlet was designed by the Isle of Man Post Office.

New Zealand Native Glowworms (2 March 2016)

Back in February on the New Zealand 2016 Stamp Issues page, I called these tiny glowworm beetles- I was wrong- they're actually gnats! Specifically, the larval stage of the New Zealand fungus gnat.

I also humorously asked: "Hey, how about 'glow-in-the-dark' glowworm stamps?"

Well I wasn't wrong there because, sure enough, these four stamps, celebrating the bioluminescent beauty of the New Zealand native glowworm have been printed using

luminous glow-in-the-dark ink. If you expose them to sunlight or shine a bright light on them (the miniature sheet gives a particularly good response in this respect, both the stamps themselves and the word GLOWWORMS) and then take them into a dark room they really shine – very bright indeed.

The stamps feature long exposure photographs taken by New Zealand photographer Joseph Michael in North Island glowworm caves from his 'Luminosity' series from 2015.

80c: Mangawhitikau Cave, Waitomo Caves village

\$1.40: Nikau Cave, Waikaretu, Tuakau

\$2.00: Ruakuri Cave, Waitomo

\$2.50: Waipu Caves, Waipu, Whangarei

As well as the four gummed stamps the \$2.00 is available as a self-adhesive, jumbo-roll single and booklet of ten code NZ6Z20BK.

I must say I like these stamps – they are different without being too gimmicky and judging by the much larger than normal actual postal usage of them we have noticed, many others are of the same opinion. Also available is a presentation pack and a Limited Edition album, containing a different format numbered miniature sheet.

Designed by Hannah Stancliffe-White, New Zealand Post, Wellington and printed by Southern Colour Print Ltd, Dunedin by offset lithography in the four process colours plus Luminescence Ultralong 'Glow-in the-Dark' luminescent ink, perf 14½x14, on Tullis Russell 104gsm red-phosphor gummed stamp paper, four gummed stamps in sheets of 25 and a four-stamp miniature sheet; self-adhesive stamp diecut perf 9½x10 in booklet of ten VM thick cream paper booklet matrix intact on Tullis Russell 210gsm PSA red-phosphor self-adhesive booklet stamp-paper, and jumbo-roll singles HM on thinner white plain backing paper, matrix intact with white edged margins.

S1572a-S1576a, S1576a(z), SM1572-5, W157

2016 Definitive and Booklet reprints

The following definitives Kiwi reprints have been released since the start of the year. Note these are provisional CP Catalogue numbers only and are subject to revision.

PE47a 20c Rainbow Falls Northland 5-Kiwis. Note there is a printing, the 4-Kiwis, missing- this will follow in due course. Note also the imprint wording change, from: Designed By: Stamps Business, New Zealand Post, Wellington, New Zealand to: Designed By: New Zealand Post Wellington, New Zealand

PE48a 50c Lake Coleridge Canterbury 4-Kiwis. Note there is a printing, the 3-Kiwis, missing- this will follow in due course.

PE53a \$1.80 Russell 3-Kiwis. Note the same imprint wording change as above.

PE55a \$2.80 Auckland 5-Kiwis

PE51a \$3.00 Tongaporutu Taranaki 5-Kiwis

PE57a \$4.00 Wellington 1-Kiwi. Note the same imprint wording change as above.

And two KiwiStamps booklets reprints Q11-Q15, code NZ4FBKLT:

W129b(w) 4-Kiwis

W129b(v) 5-Kiwi

Doctoral Thesis on Stamps

We are delighted to report the successful granting of a PhD to Dr Chris Yardley of ACT, Australia on the subject of "The Representation of Science and Scientists on Postage Stamps".

Chris, who we heartily congratulate, tells us that the book of the thesis is published and is available for download at no fee at <http://press.anu.edu.au?p=311431>

Chris asks us to stress that the on-line version is available free and concludes by saying: "It's a great time to be a stamp collector." We concur!

Publications Corner

- 100 (a) Kiwi Catalogue of New Zealand Revenue and Railway Stamps, 6th edition, edited by David Smitham (2016). It has been three years since the last edition of this Catalogue and the catalogue listings have been updated and revised. A most useful publication.....\$30
- (b) ½d Mt Cook 1900-1908 Local & New Plates (F1-5) Study by W Frank Parkinson. A study for aiding positioning of individual stamps with obvious marks or flaws. Highly detailed specialized work.....\$50
- (c) Illustrated Health New Zealand First Day Covers 1933-2000 by Stephen Jones. Comprehensive Health FDC Catalogue.....\$100
- (d) "CP Newsletter" two-ring gold embossed cover binder.....\$42
- (e) "CP Catalogue" six-ring gold embossed cover binder, plus dust-jacket.....\$46

Eighty-five Years Ago – From The New Zealand Stamp Collector – June 1931

New Zealand New Issues.

The 1d. Government Life Insurance has now appeared on Cowan paper perf. 14. The colour is red instead of carmine as before. As a result of the increased postage the 2d. Official which was withdrawn from sale some time ago has now been found necessary again but the latest issue is on Cowan paper, perf. 14. The variety without stop after Official, appears in the same position as on the other values.

Fifty Years Ago - From The CP Newsletter - June 1966.

New Zealand Notes and Comment by Warwick Paterson

4d. Puarangi (Hibiscus)

We have seen a plate block of this stamp (Plate 1111) with the green colour missing in stamps of Row Number 19. This has not been recorded before. 06a(z)

7d Koromiko – Vital Statistics

The long-awaited 7d. Pictorial appeared at last on March 16 printed in multi-colour photogravure, pink, green, yellow and mushroom, in sheets of 240 (20 horizontal rows of 12), by Harrison and Sons, London. There are two plates, 1A 1A 1A 1A and 1B 1B 1B 1B, the plate numbers and imprint appearing on the left bottom selvedge, the value (£7) on the selvedge at top right of the sheet. The watermark is “NZ and star” and the paper fine with horizontal mesh. The perforations gauge 14½ x14 (Instanta reading 14.7x14). The CP Catalogue number will be 09a and consequently the numbers from 8d. value to £1 value will be changed.

Mrs Bayne of Auckland has pointed out to us a hole-in-a-leaf at R20/5, Plate 1B 1B 1B 1B. The leaf is the one projecting from the lower flower and although the green cylinder has the flaw, the red cylinder overlaps it and colours it in. The plate block will include R20/5.

2/6d. Buttermaking

We have handled a vertical column (the first in the sheet) of this stamp with partial double perfs, 017a(w) extending seven holes (approx. 8mm) into the stamp. This has not been reported before; we can say with certainty, though that there was more than one sheet affected (we know of two). This variety highlights the fact that the 2/- stamps are now being perforated sideways using a single-comb head (previously they were perforated vertically using a triple-comb head).

1966 National Scout Jamboree

Mr R Samuel has told us that the 4d. Jamboree Stamp exists without the gold colour. Only a few copies were seen and we understand that the effect is startling – to use his expression, “ghostly”, S103a(z).

1967 Centenary of the Royal Society of New Zealand – NZ’s first decimal currency commemorative.

Designed by James Berry; printed by lithography by Thomas De La Rue & Co Ltd, London.

95	(a)	S106/7 set in blocks of four.....	UHM \$5.....	U \$6
	(b)	S106a(z) 4c inverted wmk.....	UHM \$27.....	U \$25
	(c)	S106a 4c Plate 1A1A1A2A/De La Rue imprint in a lower sheet block of twenty, inc. R9/7 skier flaw UHM (LHM on selvedge).....		\$25
	(d)	S106a 4c Plate 1A1A1A1A2A/De La Rue imprint, scarce five numbers plate in a lower sheet block of twenty, inc. R9/7 skier flaw UHM (LHM on selvedge).....		\$400
	(e)	S106a 4c Plate 1A1A1A1A plate-strip of three UHM.....		\$8
	(f)	S106a 4c Plate 1B1B1B1B plateblock of six UHM.....		\$10
	(g)	S106a 4c Plate 1A1A1A2A plateblock of six UHM.....		\$10
	(h)	S106a 4c Plate 1B1B1B2B plateblock of six UHM.....		\$10
	(i)	S106a 4c Imprint block of six UHM.....		\$10

1967 Centenary of the Royal Society of New Zealand – NZ's first decimal currency commemorative. (cont.)

95	(j)	S106a 4c Value block of six UHM.....	\$10
	(k)	S106a(y) 4c block of six with the two multipositive flaws R1/10, R2/8 UHM.....	\$10
	(l)	S106a 4c R1/3 flaw strip of three UHM.....	\$5
	(m)	S106a 4c R9/7 flaw in block of four UHM.....	\$5
	(n)	S107a 8c Plate 1A1A1A1A1A plateblock of six UHM.....	\$10
	(o)	S107a 8c Imprint block of six UHM.....	\$10
	(p)	S107a 8c Value block of four UHM.....	\$10
	(q)	S107a(z) 8c R7/6 RO flaw block of ten UHM.....	\$11
	(r)	S107a(y) 8c R1/10, R2/7 flaws block of eight UHM.....	\$15
	(s)	S107a 8c R1/2 C flaw block of four UHM.....	\$10
	(t)	S107a 8c R9/4 E flaw block of four UHM.....	\$10
	(u)	S107a 8c two lower selvage blocks of four, with and without major non-constant flaw on elbow UHM.....	\$50

Health Covers

**A fine selection of Health mostly First Day Covers. (All FDC referenced from
Stephen Jones FDC Cat. – see lot 100(c)).**

777	(a)	1933 Feb 24 T4a Hygeia lower left corner selvage copy on ½d green KGV inland postcard, Christchurch to Isle of Wight, England, two slogan postmarks Health Stamps Camps.....	\$80
	(b)	1933 Nov 8 T5a Pathway FDC on typed plain envelope Hastings local item (Cat. \$350).....	\$225
	(c)	1934 Jan 22 K15a 1d Field Marshal on Dunedin QSL card: ZL4BT, Dunedin to San Francisco, USA, slogan postmark Health Stamps Camps.....	\$25
	(d)	1934 Oct 31 T6a Crusader on long envelope plus letter contents, Masterton local item, slogan telephone postmark.....	\$50
	(e)	1935 Feb 7 T6a Crusader Dunedin to Wellington, slogan postmark Health Stamps Camps.....	\$50
	(f)	K15b 1d Field Marshall on Cunard White Star World Cruise envelope, Wellington to USA, slogan postmark Health Stamps Camps.....	\$25
	(g)	Very philatelic if attractive long envelope Whakatane local item, bearing T8a Lifebuoy franked 2 Nov 36, T9a Hiker franked 1 Oct 37, T10a Children franked 1 Oct 38, T11a/b Beachball overprints franked 16 Oct 39, T12a/b Beachball set franked 1 Oct 40.....	\$135
	(h)	1936 Nov 2 T8a Lifebuoy, unaddressed, Woodbury cancel, on H36.1AA(4) FDC.....	\$50
	(i)	1936 Nov 2 T8a Lifebuoy Weymouth to Wairoa on Bison FDC H36.1P.....	\$150
	(j)	1936 Nov 2 T8a Lifebuoy Plate 1 top left plateblock of four franked Marine Post Office RMS Makura on unaddressed H36.1T(1) FDC.....	\$100
	(k)	1937 Oct 1 T9a Hiker Plate 1 top left plate-single, Waihi local item.....	\$30
	(l)	1937 Oct 1 T9a Hiker Akaroa local item on H37.1W(2)(a) FDC.....	\$75

Health Covers (cont.)

777	(m)	1937 Oct 1 T9a Hiker pair Hamilton local item on H37.1NA(1)(a) FDC.....	\$50
	(n)	1937 Oct 1 T9a Hiker Christchurch slogan Health Stamps Camps local item on Kiwi H37.1VAB(1) FDC, on reverse Nelson South Island Cinderella – fine cover.....	\$150
	(o)	1937 Nov 8 T9a Hiker left selvedge, L5d 2½d Mt Cook & Lilies, Auckland Railway to New York, USA.....	\$35
	(p)	1938 Oct 1 T10a Children, M1a KGVI ½d green Palmerston North to Bermuda on H38.1L FDC.....	\$50
	(q)	1938 Oct 1 T10a Children, unaddressed, Hastings, on H38.1L FDC.....	\$50
	(r)	1938 Oct 1 T10a Children Whangarei local on H38.1R FDC, scarce.....	\$150
	(s)	1938 Oct 1 T10a Children Christchurch local item on Sunlight League FDC H38.1J.....	\$75
	(t)	1938 Oct 1 T10a Children Temuka to Auckland on H38.1IA FDC.....	\$75
	(u)	1938 Oct 1 T10a Children pair Auckland Railway to Yorkshire, England on H38.1C FDC.....	\$50
	(v)	1938 Oct 1 T10a Children Napier to Wellington on H38.1B(1) FDC.....	\$50
	(w)	1938 Oct 1 T10a Children Napier to Wellington on H38.1B(2) FDC.....	\$50
	(x)	1938 Oct 1 T10a Children strip of three Wellington Health Stamps Camps slogan to Finland plain envelope FDC.....	\$50
	(y)	1938 Oct 29 T10a Children pair, M4a KGVI 1½d chocolate pair, V6a 1d Air Wanganui Registered to California USA, received 18 Nov Seattle, 20 Nov 38 Oakland.....	\$50
	(z)	1939 Oct 16 T11a/b Beachball overprints North Avon to Christchurch on Sunlight League FDC H38.1J.....	\$60
778	(a)	1939 Oct 16 T11a/b Beachball overprints Whangarei local item on H39.1G FDC scarcity: 8.....	\$200
	(b)	1939 Nov 16 L4b 2d Whare Auckland Health Stamps Camps slogan to St Lucia, backstamp Castries 10 Jan 40.....	\$100
	(c)	1940 Oct 1 T12a/b Beachball Napier to USA on H40.1E(1) FDC.....	\$75
	(d)	1940 Oct 1 T12a/b Beachball Waharoa local item on H40.1E(1) FDC.....	\$50
	(e)	1940 Oct 1 T12b 2d Beachball Wellington to Canterbury on H40.1B FDC.....	\$75
	(f)	1940 Oct 17 T12a/b Beachball pairs Napier to California USA, Opened and passed by Censor in NZ tape and Passed by Censor 2 cachet.....	\$50
	(g)	1941 Oct 4 T13a/b 1941 Beachball Dannevirke local on H41.1A FDC.....	\$75
	(h)	1942 Oct 1 T14a/b 1942 Swing Invercargill local item on H42.1C FDC.....	\$50
	(i)	1942 Oct 1 T14a 1d pair, T14b 2d single 1942 Swing Wellington local item on H42.1B FDC.....	\$50
	(j)	1943 Oct 1 T15a/b Triangulars Wellington to NSW, Australia on H43.1L(1)(a) FDC, manuscript 'Received at Albury minus contents 15/10/43', nice cover.....	\$60
	(k)	1944 Oct 9 T16a/b Elizabeth & Margaret Terrace End to Palmerston North on H44.1CAA FDC, 'NEW ZEALAND' slight doubling.....	\$75

Health Covers (cont.)

778	(l)	1944 Oct 9 T16a/b Elizabeth & Margaret Timaru to London, England on H44.1CAB Medawar FDC.....	\$75
	(m)	1944 Oct 9 T16a/b Elizabeth & Margaret Christchurch local item on H44.1EB FDC.....	\$50
	(n)	1944 Oct 9 T16a/b Elizabeth & Margaret Ferry Road to Ohio USA, Passed DDA/7 censor, on H44.1F(1) FDC.....	\$50
	(o)	1944 Nov 13 L4f 2d Whare Dunedin Health Stamps Camps slogan to London, UK, Opened by Examiner DDA/168 tape.....	\$25
	(p)	1946 Oct 24 T18a/b Soldier Auckland to NSW Australia on H46.1N FDC, scarcity: 8.....	\$200
	(q)	1946 Oct 24 T18a/b Soldier Wellington to London, UK on H46.1ACA FDC, scarcity: 7.....	\$150

to be continued

New Zealand 1948 & 1949 Royal Visit Artists Drawings

1(a) Offered this month is a collection of twelve original sketches or drawings from the artist James Berry for proposed stamp issues commemorating the 1948 Royal Visit to New Zealand of Princess Elizabeth and Prince Philip and the 1949 Royal Visit of HM George VI.

The collection comprises eleven preliminary concept drawings on tracing paper and one finished stamp proposal on art paper. Included amongst the tracing paper sketches are portraits of King George VI and Queen Elizabeth, Princess Elizabeth and Prince Philip, Waitangi and, significantly, HMS Vanguard. This drawing of HMS Vanguard was developed into the 3d blue 1949 Royal Visit stamp, the set of which was withdrawn when the illness of HM George VI prevented his fulfilling the planned Royal Visit that year. Three examples of this stamp have appeared on the market.

The finished white art paper stamp proposal is a fine item indeed. It is a 3d stamp entitled Royal Visit 1948 in suggested colours of brown and dark blue. It depicts insets of Prince Philip and Princess Elizabeth above HMS Vanguard, with surrounds of New Zealand fern leaves and British oak leaves.

The collection: \$7500

Health Artists Drawings

Also available are these most attractive James Berry originals for proposed New Zealand Health stamps.

2	(a)	Original sketch on tracing paper for 1½d Health stamp showing a running boy with silver-fern and NZ.....	\$300
	(b)	Original sketch on tracing paper for 3d Health stamp showing a child riding a dolphin. This may possibly be connected to the 1955/56 Opononi happening of Opo, the Friendly Dolphin.....	\$500

- 2 (c) Original sketch on tracing paper for a 1½d Health stamp showing children feeding birds at the beach.....\$300
- (d) Two original sketches, one on tracing paper, one lightly on cream paper of birds 2d Health stamps.....\$450
- (e) Two original sketches, one on tracing paper, one on small piece white paper of seagulls Health stamps.....\$300
- (f) Two similar sketches, one on tracing paper, one on large sheet white paper for 1½d birds Health stamp.....\$400

DISCOUNT OFFERS

1873 – 1892 Section B NEWSPAPER STAMPS

½d value designed by the NZ Government Printer, John Davies. The die was engraved on wood in Melbourne, Australia and printed from an electrotpe plate of 240 at the Government Printing Office, Wellington.

UHM - Unhinged Mint

LHM – Lightly Hinged Mint

FU – Fine Used

U – Fine Commercially Used

DISCOUNT OFFERED FROM THESE LISTS FOR THE MONTH OF JUNE ONLY

On Total Orders Over \$250 – 10% discount

On Total Orders Over \$500 – 20% discount

		UHM	LHM	FU	U
65	(a) B1a 1873 NZ wmk, perf 10 mint no gum	–	\$125	–	\$30
	(b) B1a(y) no wmk, p.10 mint no gum	–	\$125	–	–
	(c) B1b 1873 NZ wmk, perf 12½, faults (thin)	–	–	–	\$25
	(d) B2a 1875 Small Star wmk, perf 12½	\$125	\$20	\$8	\$5
	(e) B2a(3) 1885/6 Salmon shade	–	–	–	\$25
	(f) B2b 1875 Small Star wmk, perf 11¾	\$150	\$60	\$15	\$5
	(g) B3a 1892 NZ/star wmk, perf 12½	\$35	\$15	\$3	–
	(h) B3a block of four	\$150	–	–	–
	(i) B3a(y) letter wmk	\$75	\$35	\$20	\$10
	(j) B3a(y) letter wmk block of four	\$200	–	–	–
	(k) B3a(z) no wmk	–	–	\$30	–
	(l) B3a good strip of three GSP94 Wellington	–	–	\$20	–
	(m) – ½d cutouts ex-newspaper-wrappers	–	–	–	\$5



75(b)



78(f)



78(a)



65(h)



73(e)



75(d)



86(f)

DISCOUNT OFFERS

1909 – 1926 Section J 1d DOMINION

1d value adapted from the 1901 1d Universal, which had been designed by Guido Bach and G Drummond; engraved by Perkins Bacon Ltd, London and typographed by the NZ Government Printer, Wellington

UHM - Unhinged Mint **LHM** – Lightly Hinged Mint **U** – Fine Commercially Used

		UHM	LHM	U
70	(a) J1a 1909 De La Rue	\$11	\$2	\$1
	(b) J1a(z) offset on back	\$150	\$85	–
	(c) J1a(q) R10/19 'Q' flaw	\$125	\$60	\$40
	(d) J1a(o) R5/24 'Broken globe' flaw	\$40	\$20	\$10
	(e) J1a(p) R9/19 ships bow split flaw	–	–	\$40
	(f) J1a(m) R3/1 'feather' flaw	–	–	\$15
	(g) J1a(n) faulty top frame	–	–	\$5
	(h) J1a R2/18 'N' flaw	–	\$50	\$20
	(i) J1a(o) R5/24 'Broken globe' block of four FU	–	–	\$50
	(j) J1a study of 28 used, showing plated 'fresh entries', platewear, etc, some in CP's handwriting. Interesting lot	–	–	\$25
	(k) J1a packet of five good used shades	–	–	\$40
	(l) J1a(5) shade 'ruby'	–	\$45	\$30
	(m) J1a(s) blurred booklet print	–	–	\$6
	(n) J1a : W3b(q) booklet pair	–	–	\$60
	(o) J1a(4) : W3b(q) booklet pair	–	–	\$60
	(p) J1a(s) : W3b(q) booklet pair	–	–	\$80
	(q) J01a(1) 1910 De La Rue Official	\$10	\$3	\$1
	(r) J01a(2) Carmine-pink	\$50	\$20	\$10
	(s) J01a(x) R3/1 'feather' flaw	–	\$80	\$15
	(t) J01a(y) R5/24 'Broken globe' flaw	–	–	\$15
	(u) J01a(w) R10/19 'Q' flaw	–	–	\$60
	(v) J01a R2/18 'N' flaw	–	–	\$10
	(w) J01 packet of two Official overprint forgeries	–	–	\$40
	(x) J0 ridiculous O.P.S.O. forgery, an oddity	–	–	\$40
	(y) J0 Official nearly missing stop, unusual	–	–	\$40
71	(a) J2a 1924 Jones	\$85	\$30	\$10
	(b) J2a(v) R3/1 'feather' flaw	–	\$70	\$90
	(c) J2a(w) R5/24 'Broken globe' flaw	–	–	\$80
	(d) J2a(u) faulty top frame	–	\$40	–

1909 – 1926 Section J 1d DOMINION (cont.)

		UHM	LHM	U
71	(e) J2a(z) thick paper	-	-	\$15
	(f) J2a : W4c(w) booklet pair	-	-	\$50
	(g) J02a 1925 Jones Official	\$90	\$30	\$20
	(h) J02a(x) faulty top frame	-	-	\$40
72	(a) J3a 1925 Unsurfaced	\$320	\$100	\$350
73	(a) J4a 1925 Sideways wmk	\$40	\$20	\$60
	(b) J4a(z) no wmk	\$80	-	-
	(c) J4a(y) inverted wmk	\$100	\$50	\$150
	(d) J4a(x) letters wmk	\$60	\$40	\$100
	(e) J4a fine block of six with 1925 Wellington slogan and circular postmarks, nice item	-	-	\$300
74	(a) J5a 1925 Art litho wmk paper	\$10	\$4	\$5
	(b) J5a double gum	\$15	-	-
	(c) J5a(z) Art litho wmk on front	-	\$250	-
	(d) J5a(y) Art litho wmk on front and back, short corner	-	\$350	-
	(e) J5a(p)(x) R3/1 'feather' flaw on HM paper	\$150	\$100	-
	(f) J5a(w) black wmk	-	\$250	-
	(g) J5a(u) greenish-black wmk	-	\$25	\$30
	(h) J5a(r) colourless wmk VM	\$40	\$20	\$30
	(i) J5a(q) R5/24 'Broken globe' flaw	-	\$100	\$75
	(j) J5a(o) faulty top fram	\$50	\$30	\$40
	(k) J5a(s) colourless wmk HM	-	-	\$100
	(l) J5a(p) R3/1 'feather' flaw	-	-	\$80
	(m) J05a 1925 Art litho wmk paper Official	\$15	\$5	\$60
75	(a) J6a 1925 Cowan	\$50	\$20	\$1
	(b) J6a(y) imperf pair, fine error item	-	\$200	-
	(c) J6a(v) R3/1 'feather' flaw	-	\$70	\$60
	(d) J6a(u) R9/23 'Broken N' flaw	\$250	\$150	\$200
	(e) J6a(w) R5/24 'Broken globe' flaw	-	-	\$75
	(f) J6a : W4d(m) booklet pair	-	-	\$275
	(g) J6a : W4d(n) two left & right booklets singles	-	-	\$125
	(h) J6a : W4d(p) booklet pair	-	-	\$30
	(i) J06a 1925 Cowan Official	\$60	\$20	\$7
	(j) J06a(z) R5/24 'Broken globe' flaw	-	\$90	-
	(k) J06a(y) R3/1 'feather' flaw	\$150	\$80	\$75
	(l) J06a(w) faulty top frame	-	-	\$25
76	(a) J7a 1926 Cowan reversed	\$50	\$20	\$5

1909 – 1926 Section J 1d DOMINION (cont.)

		UHM	LHM	U
76	(b) J7a(x) R5/24 'Broken globe' flaw	–	\$150	\$100
	(c) J7a(u) faulty top frame	–	\$50	\$40
	(d) J7a(w) R3/1 'feather flaw'	–	–	\$100
	(e) J7a(v) R9/23 'Broken N' flaw	–	–	\$200
	(f) J7a : W4e(w) Kodak booklet pair	–	–	\$30
	(g) J7a : W4e(w) set of four Kodak singles, top, left, right	–	–	\$20
	(h) J07a(1) 1927 Cowan reversed Official	\$250	\$90	\$80
	(i) J07a(w) faulty top frame	\$300	–	–
77	(a) J8a 1926 Wiggins Teape	\$100	\$40	\$20
	(b) J8a(x) thick paper	\$150	–	\$75
	(c) J8a(z) inverted wmk	–	–	\$75
	(d) J8a(y) soft paper	–	–	\$50
	(e) J8a(u) R9/23 'Broken N' flaw	–	–	\$150
	(f) J8a(t) faulty top frame	–	–	\$40

1d Dominion Proof material – some fine items offered here:

- 78 (a) Die Proof by Perkins Bacon & Co on glazed card (45mmx60mm) with uncleared surrounds and with surrounds scratched away, in black. Fine and scarce.....\$1250
- (b) Plate 12 Proof block of four in black, perfed on wmked paper, light gum ageing.....\$120
- (c) Plate 12 Proof block of four in black, imperf on orange-red card.....\$120
- (d) Plate 13 Proof block of four in black, imperf on wmked paper, light gum ageing.....\$100
- (e) Plate 13 Proof top selvedge block of four in grey-black, imperf on thick card.....\$100
- (f) Plate 13 Proof block of four in black, perfed on wmked paper, double perms at top, minor gum staining.....\$160
- (g) Plate Proof block of four in grey-black, imperf on unwmked paper.....\$100
- (h) Plate Proof pair in black, imperf with offset print on reverse.....\$75

1903 – 1939 Section U EXPRESS DELIVERY

6d value: 1903 design printed by typography by the NZ Government Printing Office, Wellington; 1939 design by James Berry, engraved by the Stamp Printing Office, Melbourne, Australia and recess-printed by the Government Printer, Wellington.

UHM - Unhinged Mint **LHM** - Lightly Hinged Mint **U** – Fine Commercially Used

		UHM	LHM	U
80	(a) U1a 1903 perf 11	–	\$70	\$60
	(b) U1b(1) 1926 Cowan p.14x14½ mauve	\$200	\$70	\$65
	(c) U1b(2) purple	–	\$70	\$65
	(d) U1c 1936 Cowan p.14x15	\$225	\$90	\$60
	(e) U1d(1) 1937 Wiggins Teape p.14x14½ mauve	–	–	\$80
	(f) U1d(2) deep mauve	\$250	–	\$80
	(g) U1e 1939 Wiggins Teape p.15	–	\$120	–
	(h) U2a(1)(2)(3) 1939 set of three shades	\$15	\$6	\$24
	(i) U2a(2) top right block serialnumber 2563847	\$20	–	–
	(j) U2a(y) brown gum	\$6	–	–
	(k) U2a(y) brown gum lower-left or lower-right blocks ea	\$20	–	–
	(l) U2a(x) double gum	\$50	\$30	–
	(m) U2a on piece First Day cancel 16AU39	–	–	\$50

1931 – 1935 Section V AIR STAMPS

1931 series designed by LC Mitchell, plates prepared by the Royal Mint, London, printed by typography by the NZ Government Printing Office, Wellington. 1935 series designed by James Berry, engraved by the Stamp Printing Office, Melbourne, Australia, recess- printed by the Government Printer, Wellington.

UHM - Unhinged Mint **LHM** - Lightly Hinged Mint **U** – Fine Commercially Used

		UHM	LHM	U
85	(a) V1a 1931 3d chocolate	\$160	\$40	\$25
	(b) V1b 1935 3d p. 14x15	\$400	\$200	\$500
	(c) V2a 1931 4d purple	\$160	\$40	\$30
	(d) V3a 1931 7d brown-orange	\$160	\$40	\$30
	(e) V4a 1931 5d overprint, block of four UH \$200	\$60	\$30	\$30
	(f) V5a 1934 7d Trans-Tasman	\$160	\$50	\$70
	(g) V5a(y) 7d Broken “N” in “IN”	\$200	\$150	\$85
	(h) V6a/c 1935 set of three	\$40	\$20	\$10
	(i) V6a(1)/(4) 1d set of four shades	–	–	\$12
85	(j) V6a(1) 1d block of four U	–	–	\$10

		UHM	LHM	U
85	(k) V6a 1d Plate 1 plateblock of four	\$10	-	-
	(l) V6a 1d Plate 1 plate-pair U	-	-	\$10
	(m) V6b(1)/(3) 3d set of three shades	-	-	\$15
	(n) V6b(1) 3d block of four U	-	-	\$20
	(o) V6b 3d Plate 2 plateblock of four	\$50	-	-
	(p) V6c(1)/(4) 6d set of four shades	-	-	\$40
	(q) V6c(1) 6d block of four U	-	-	\$20
	(r) V6c 6d Plate 3 plateblock of four	\$150	-	-
	(s) V6c 6d Plate 3 plate-single	\$50	\$30	-

Flown Covers

86	(a) V4a 5d 1931 Dec 24 Christmas AirMail flights, various, each.....	\$50
	(b) V4a 5d 1932 Jan 20 AirMail First Flights, various, each.....	\$50
	(c) V4a 5d 1932 March AirMail First Flights, various, each.....	\$50
	(d) V4a 5d 1932 April 30 AirMail Special Flights, various, each.....	\$50
	(e) V4a 5d 1938 July 5 genuine commercial AirMail Wellington to Christchurch.....	\$50
	(f) V5a(z) 1934 Jan 7d Trans-Tasman Flown "Ulm" cover, Nelson Registered.....	\$135
	(g) V5a 1934 Feb 7d Trans-Tasman flown cover Auckland to Melbourne via Sydney.....	\$100
	(h) V5a 7d Trans-Tasman lower selvedge pair 31 Dec 1941 Newmarket local item.....	\$130
	(i) V5a(y) 7d Broken "N" in "IN" in pair 31 Dec 1941 Newmarket local item.....	\$200

1898-99 Section VP PIGEON POST STAMPS

Local 'airmail' stamps for Great Barrier Island and Marotiri Island from "The Original Great Barrier Pigeongram Service" and "The Great Barrier Pigeongram Agency".

UHM - Unhinged Mint

LHM – Lightly Hinged Mint

MNG – Mint No Gum

		UHM	LHM	MNG
88	(a) VP2 1899 1/- 'Special Post'	\$300	\$200	\$50
	(b) VP4 1899 1/- 'Pigeongram'	-	\$175	\$60
	(c) VP7 1899 6d triangular	-	\$150	\$50
	(d) VP8 1899 1/- triangular	-	-	\$90

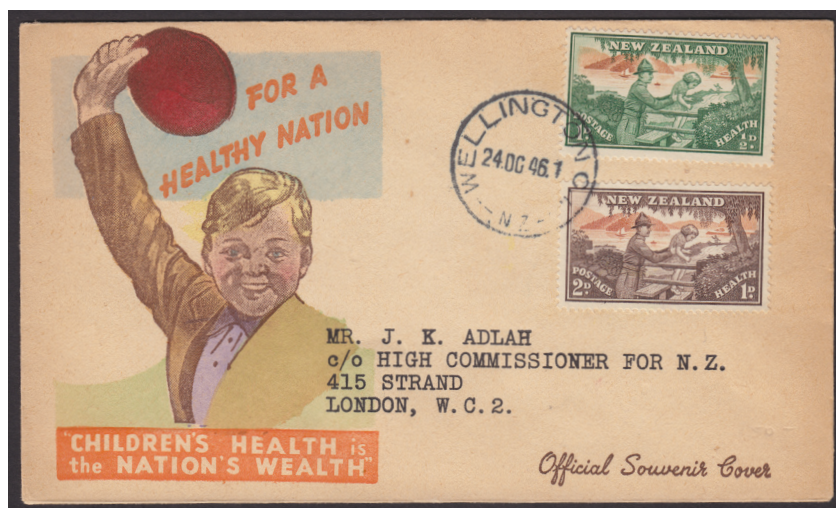
DISCOUNT OFFERED FROM THESE LISTS FOR THE MONTH OF JUNE ONLY

On Total Orders Over \$250 – 10% discount

On Total Orders Over \$500 – 20% discount



778(p)



778(q)

The CP Newsletter is a confidential source of information for philatelists and collectors. Published by Campbell Paterson, Auckland New Zealand. ISSN 1172-0166

All lots offered in this newsletter are unconditionally guaranteed as genuine and as described. They are offered subject unsold and will be sent on approval to known clients, Postage is additional. GST not included (NZ only).

The information contained in this newsletter is private to subscribers and unauthorised reproduction is expressly forbidden.

Postal orders to **PO Box 99988, Newmarket, Auckland 1149, New Zealand.**

To obtain more detailed descriptions of the material offered in this newsletter or to place orders, phone us **0800 755 557** or Fax **64-9-379 3087** or Email: service@campbellpaterson.co.nz

Our website is: www.campbellpaterson.co.nz Overseas clients phone (toll free) UK: **0500-893 975**

