

CAMPBELL



PATERSON

# NEWSLETTER

FOR COLLECTORS OF NEW ZEALAND STAMPS

VOLUME 73 NUMBER 2 SEPTEMBER-OCTOBER 2023



392



445

## CP'S NEW ZEALAND STAMPS - WELCOME TO OUR TRADITION

CAMPBELL PATERSON PO Box 99988, Newmarket, Auckland 1149, New Zealand

1 Ngaire Avenue, Newmarket, Auckland 1051, New Zealand

T. 64-9-522 0311, F. 64-9-522 0313

E. [service@campbellpaterson.co.nz](mailto:service@campbellpaterson.co.nz) W. [www.campbellpaterson.co.nz](http://www.campbellpaterson.co.nz)



New Zealand  
Stamp Dealers  
Association Inc.  
[www.nzstda.com](http://www.nzstda.com)



# Editorial

## David Holmes & Nigel Shanks

Welcome to a second newsletter for 2023 with an update on Recent Exhibitions, Auction Sales and other relevant information.

### **CAMPBELL PATERSON 2023 SUPPLEMENT**

The latest Campbell Paterson 2023 Supplement was issued at the end of July. If you have not received your supplement by now please let our office know. We recommend you keep your catalogue up-to-date.

### **NZ 2023 FIAP INTERNATIONAL STAMP EXHIBITION**

The Exhibition was held in Auckland at the start of May was a successful Exhibition with good attendances and sales on the first 3 days. The Exhibition included 9 Stand holders from Overseas - from Australia, Taiwan, USA & England. The first day, a Thursday, was the busiest day at a Stamp Exhibition in New Zealand since the World International Exhibition held in 1990. Well done to the organisers for all of their hard work and perseverance after having the NZ2020 Exhibition interrupted due to Covid. There are plans underway for a National Stamp Exhibition to be held in Auckland in November 2024.

### **NZ POST RATE RISES**

Every year the price of a Standard Letter rises. Often a 10c or 20c rise. But this year the price has gone up from \$1.70 to \$2. It is disappointing to see such a large increase given the cost of living pressures that everyone is going through at this time. If we were offered a better service I could accept such an increase but only recently a letter from Nelson to Auckland took 11 days to arrive in my PO Box. To NZ Post please give us a better service. People do send letters and want a reliable service.

### **BOGUS STAMPS**

Please continue to be aware of stamps offered on sites such as Trade Me or eBay offering bogus stamps. Recently we were made aware of a listing for a NZ 1970 4c Moth Missing Yellow offered as a reproduction with a Catalogue Value of \$750. The Error stamp might have a catalogue value of \$750 but a reproduction has no catalogue value. TradeMe were made aware of this misinformation and removed the seller from its site. Don't be fooled by these offerings of rare stamps or even proofs. I have seen reproductions on white gummed paper of the unissued 1949 Royal Visit stamps. They have no value and are just printed pieces of paper.

### **AUCTION REALISATIONS**

The Stamp Market remains strong for Early New Zealand Stamps. In our Ken Lynch Chalon Collection Public Auction Sale held on 29 July a 2d Blue Imperf SG 10 on the earliest recorded entire made \$5900 against an estimate of \$1500, a 6d Black Brown Serrate 18 SG 64 sold for \$6750 and was estimated at \$2000, while a Rare 2d Orange P10 SG 130c made \$22,500 against an estimate of \$25,000.

In our most recent Public Auction Sale held at the end of August one of the highlights of the sale was a 1906 1d Claret Christchurch Exhibition Mint sold for \$28,125 against an estimate of \$17,500 while a 1/- Green London Print Full Face Queen sold for \$27,000 against an estimate of \$30,000. Our Total Sales including after sales now exceed \$500,000. (Prices include the buyer's premium).



251



252



253



254



255



256



257



258



259



260



262



263



265



267



269



272



273



275



277



281



289



297



296



299



306



322



314



320



327



341



345



509



510



479



486



487

**SPECIAL OFFER**  
**PURCHASE 3 OR MORE ITEMS FROM THIS LIST**  
**AND RECEIVE A 10% DISCOUNT**

## SEPTEMBER—OCTOBER OFFERS

### NEW ZEALAND STAMPS

#### 1855-62 IMPERF FULL FACE QUEENS

251	U	1d Orange-Vermilion Pelure Paper CP A1g (SG 81) Very Good Used with 4 Close to Good Margins and has part of the next stamp on the top margin. Scarce. CP Cat \$6000 (1)	2750
252	U	2d Deep Blue No Watermark CP A2c(4) (SG11) Fine Used with 4 Close to Good Margins. CP Cat \$700 (1)	350
253	U	2d Deep Greenish Blue CP A2a (SG 2) Horizontal Pair with 4 Margins Very Good to Fine Used postmarked with Obliterator '10' (Wellington) cancel. Fine Item. CP Cat \$3000+ (2)	1500
254	U	2d Pale Blue No Watermark CP A2b(2) (SG5) Fine Used with 4 Close to Good Margins. CP Cat \$1000 (1)	400
255	U	2d Ultramarine Pelure Paper CP A2f(1) (SG 82) Very Good Used with 3 Margins. CP Cat \$2500 (1)	500
256	U	6d Deep Red-Brown CP A5b(4) (SG 43) Fine 4 Margins. CP Cat \$375 (1)	200

#### 1862-73 FULL FACE QUEEN CANCELS

257	U	1/- Green CP A6m postmarked with a light 'Marine PO JL 18 64' cancel. Scarce (1)	250
258	U	1d Carmine-Vermilion CP A1m(1) (SG 110) with 'T' (Taipo) Manuscript cancel. Fine & Scarce (1)	250
259	U	1d Carmine-Vermilion Imperf CP A1e(4) postmarked with part 'HEADQUARTERS' Obliterator. Maori War Period cancel (1)	250
260	U	1d Orange No Watermark CP A1d (SG8) cancelled by 'DRURY 6/6/62' Manuscript cancel with a light Obliterator '1' cancel. The stamp has slight faults/tears. (1)	200
261	U	1d Orange-Vermilion CP A1m(3) (SG 111) postmarked by part 'TAURANGA' Excised Headquarters Obliterator cancel (1)	100
262	U	1d Orange-Vermilion CP A1m(3) postmarked with Large 'W' (Hokitika) cancel. The stamp has a slight blunt top right corner (1)	150
263	U	1d Red CP A1m(1) postmarked with Obliterator 'C' cancel plus a Manuscript 'S' cancel (1)	200
264	U	2d Blue Imperf CP A2d (SG 38) postmarked by part 'WANGAREI' cancel. Has 4 Close to Good Margins (1)	100
265	U	2d Blue Imperf CP A3d (SG39) with 2/3 Close Margins postmarked with Fish Hook 'S' large cancel (1)	250
266	U	2d Blue NZ Watermark P12 1/2 CP A2j (x) (SG 105) postmarked by part 'RAG(LAN)' cancel (1)	150
267	U	2d Blue P13 CP A2e (SG 72) postmarked with a good 'O23' (Dunston) cancel (1)	100

## SEPTEMBER—OCTOBER OFFERS (cont.)

268	U	2d Blue Plate 1 CP A2m (SG 113) & 6d Red-Brown CP A5h (SG 122) both with part 'PORT WAIKATO' cancels (2)	150
269	U	2d Blue Plate 1 CP A2m (SG 113) with 'GWAVAS' Manuscript cancel (1)	200
270	U	2d Blue Plate 2 CP A2n (SG 114) postmarked by part overinked 'PROVINCE-OF-AUCKLAND/4' cancel (1)	100
271	U	2d Blue Plate 2 CP A2n (SG 114) postmarked with part 'Saltwater Creek' cancel with a Obliterator 'C' cancel overstamped (1)	100
272	U	2d Orange CP A2s postmarked with 'TE MUKA' Star cancel (1)	250
273	U	2d Orange CP A2s(4) (SG 134) with 'Waitetuna 23/7/73' Manuscript cancel. Fine & Complete (1)	200
274	U	3d Brown-Lilac CP A3a (SG 40) postmarked with part 'NEWCAS(TLE) FE 1 67' cancel. The stamp has 3 Margins and minor stain (1)	150
275	U	3d Lilac CP A3d postmarked with Large 'S' (Stafford) cancel (1)	250
276	U	3d Lilac CP A3d postmarked with light 'Coromandel' Obliterator cancel (1)	150
277	U	4d Rose CP A4a with Manuscript 'K' cancel. The stamp has an Imperf bottom edge. Fine Item (1)	300
278	U	6d Black-Brown P13 CP A5c(1) (SG 75) postmarked with light 'O14' (Tokomoiro) cancel (1)	150
279	U	6d Blue CP A5k postmarked Obliterator '25' (Queenstown) (1)	100
280	U	6d Blue CP A5k postmarked with a 'TE MUKA' Star cancel (1)	300
281	U	6d Brown Imperf CP A5b(3) with 'Postmaster's General Frank' part cancel. Very Scarce (1)	500
282	U	6d Pale Blue CP A5k(3) postmarked with 'ALF' (Alford Forest) cancel Scarce (1)	300
283	U	6d Red-Brown CP A5h (SG 122) postmarked with 'O5' (Waikouaiti) cancel (1)	100
284	U	6d Red-Brown CP A5h (SG 122) postmarked with part 'QUEENS REDOUBT' Obliterator cancel. Maori War Period. (1)	150
285	U	6d Red-Brown CP A5h (SG 122) with 'HOWICK 29/7/65' Manuscript cancel with a light obliterator cancel. Scarce (1)	250
286	U	6d Red-Brown CP A5h (SG 122) with part 'MATAKANA' cancel (1)	100
287	U	6d Red-Brown CP A5h postmarked with light 'KOWAI' cancel (1)	150
288	U	6d Red-Brown Imperf CP A5b(5) (SG 43) postmarked with part 'MAHURANGI' OC 29 64 cancel (1)	150

### **1862-73 PERF FULL FACE QUEENS**

289	U	1/- Deep Green P13 Pelure Paper CP A6f(w) (SG 94) Very Good Used CP Cat \$6000 (1)	1500
290	U	1d Carmine-Vermilion P13 CP A1f (SG 69) Good Used CP Cat \$1000 (1)	250
291	U	1d Orange-Vermilion CP A1m(3) (SG 111) Block of 4 postmarked with 3x heavyish 'A over 3' (Thames) cancels. (4)	250
292	U	1d Orange-Vermilion CP A1m(4) with Fiscal cancel. (1)	100
293	U	1d Orange-Vermilion P13 CP A1f(1) (SG 68) Good Used. Centred to top and minor blunt perfs at left. CP Cat \$1000 (1)	200
294	U	2d Blue P13 CP A2e(7) (SG 72) Very Good Used CP \$250 (1)	100

## SEPTEMBER—OCTOBER OFFERS (cont.)

295	U	2d Orange CP A2s(z) with Horizontal 'Double Perforations' at top Very Good Used. CP Cat \$350 (1)	250
296	U	2d Orange P10x12 1/2 CP A2r (SG 130) Strip of 3 Very Good Used postmarked with Obliterator '20' (Greymouth) cancel. CP Cat \$450 (3)	250
297	U	2d Pale Ultramarine P13 Pelure Paper CP A2f(y) (SG 92) Very Good Used CP Cat \$3000 (1)	600
298	U	2d Ultramarine P13 Pelure Paper CP A2f(z) (SG 91) Very Good to Fine Used CP Cat \$2500 (1)	500
299	U	3d Lilac CP A3d (SG 117) Horizontal Strip of 3 postmarked with Obliterator '4' (Mangonui) light cancels. (3)	300
300	*	4d Bright Orange-Yellow CP A4c(z) (SG 139a) Mint with part block letters 'RS'. CP Cat \$1000 (1)	500
301	U	6d Black-Brown P13 Pelure Paper CP A5d(y) SG 93 Very Good Used CP Cat \$1000 (1)	500
<b><u>1855-73 FULL FACE QUEEN PROOFS</u></b>			
302	*	1d Orange Imperf Reprint from R14/12 with 4 Close to Good Margins (1)	150
303	*	2d Blue Imperf Reprint from R8/8 with 4 Margins (1)	150
304	*	2d Deep Blue Imperf Reprint with R20/2 with 4 Margins Fine (1)	150
<b><u>1874 FIRST SIDEFACES</u></b>			
305	**	1/2d Newspaper CP B3a (SG 151) Unhinged (1)	70
306	U	1d Lilac CP C1f cancelled by 'HENLEY' (DN) Manuscript cancel with a part Obliterator cancel. Very Scarce (1)	200
307	U	2/- Claret CP C7a(2) SG 185 Vertical Pair with a fiscal cancel. (2)	200
308	U	6d Blue CP C5c SG 183 postmarked with 'S' in circle (Stafford) cancel Scarce (1)	100
<b><u>1898 PICTORIALS</u></b>			
309	**	1/- Kea/Kaka P11 No Watermark CP E18b(5) Bright Orange-Red Unhinged CP Cat \$550 (1)	500
310	**	1/2d Mt Cook (Purple) the CP listed shades CP E1a (1,2,3) Unhinged CP Cat \$260 (3)	200
311	**	1d Lake Taupo CP E2a - the 3 listed CP shades (1,2,3) Unhinged CP Cat \$200 (3)	150
312	**	2 1/2d Wakatipu P14 CP E8d(1) Deep Blue Unhinged (1)	150
313	**	2 1/2d Wakitipu CP E7a (2) Sky-blue Unhinged (1)	60
314	**	2/- Milford Sound P11 No Watermark CP E20b(1) Blue-Green Unhinged CP Cat \$2500 (1)	2000
315	**	2d Pembroke Peak (Brown-Lake) CP E5a(1) Brown Lake shade Unhinged CP Cat \$300 (1)	250
316	**	3d Huias London Print CP E9a(2) Unhinged CP Cat \$300 (1)	250
317	**	3d Huias P11 No Watermark CP E9b(1) Unhinged Centred left. CP Cat \$250 (1)	200
318	**	4d Terraces CP E11a(1) Dull Rose shade Unhinged. CP Cat \$125 (1)	100
319	**	4d Terraces CP E11a(3) Bright Rose shade Unhinged CP Cat \$125 (1)	100
320	**	5/- Mt Cook P14 Sideways Watermark CP E21e Unhinged (1)	2000
321	**	5d Otira P14 CP E13d(1) Brown shade Unhinged (1)	300
322	**	6d Green Kiwi P11 No Watermark CP E14b(1) Deep Green Unhinged CP Cat \$750 (1)	600



## SEPTEMBER—OCTOBER OFFERS (cont.)

323	**	8d Canoe P11 No Watermark CP E16b(2) Prussian Blue Unhinged. Centred left CP Cat \$400 (1)	325
324	**	9d Terraces P14 CP E17d(1) Purple Unhinged (1)	300
<b><u>1898 PICTORIAL OFFICIALS</u></b>			
325	**	1/- Kea/Kaka CP EO18e(1) Orange-Red Unhinged (1)	750
326	**	2/- Milford Sound CP EO20e(1) Blue-Green Unhinged CP Cat \$900 (1)	800
327	**	5/- Mt Cook CP EO21e Unhinged CP \$1250 (1)	1000
<b><u>1900 PICTORIALS</u></b>			
328	**	1 1/2d Boer War CP E4a(3) Chestnut shade Unhinged (1)	100
329	**	1 1/2d Boer War CP E4a(4) Pale Chestnut shade Unhinged (1)	100
330	U	1 1/2d Boer War CP E4a(z) Horizontal Double Perforations Error at top Very Good Used postmarked 'Dunedin R 2 SP 04' CP Cat \$250 (1)	200
331	**	1 1/2d Boer War P14 CP E4b(2) Chestnut shade Unhinged (1)	75
332	**	1 1/2d Boer War P14 Pale Chestnut CP E4b(1) Unhinged (1)	75
333	**	1 1/2d Boer War Reddish Chestnut CP E4a(6) Unhinged (1)	150
334	**	1d Terraces CP E3a(2) Rose-Red Unhinged (1)	100
335	**	2d Pembroke Dull Purple CP E6b(1) Unhinged (1)	50
336	**	4d Lake Taupo P11 No Watermark CP E12a(3) Deep Blue & Bistre Brown Unhinged (1)	50
337	**	4d Lake Taupo P14 CP E12c(1) Deep Blue & Deep Brown Unhinged (1)	50
338	**	6d Red Kiwi P11 No Watermark CP E14c(1) Rose shade Unhinged CP Cat \$250 (1)	200
<b><u>1900 PICTORIAL OFFICIALS</u></b>			
339	**	1/2d Green Mt Cook P14 CP FO4b(2) Yellow-Green Unhinged (1)	50
340	**	2d Pembroke CP EO6b(2) Red-Purple Unhinged (1)	50
341	**	6d Large Kiwi CP EO14g Unhinged CP Cat \$1800 (1)	1250
<b><u>1907 PICTORIALS</u></b>			
342	**	1/- Kea/Kaka P14x 12 3/4-13 1/4 CP E19a Unhinged CP Cat \$1000 (1)	850
343	**	3d Huias P14x15 CP E10c(2) Yellow-Brown Unhinged (1)	250
344	**	6d Kiwi Carmine-Pink CP E15c(1) Unhinged (1)	300
345	**	OFFICIAL 6d Reduced Kiwi CP EO15c(1) Unhinged CP Cat \$1800 (1)	1500
<b><u>1909 KING EDWARD VII</u></b>			
346	**	1/- Orange-Vermilion P14 Line CP H8a Unhinged (1)	600
347	**	1/- Orange-Vermilion P14x14 1/2 CP HO8b(1) Unhinged (1)	500
348	**	2d Pale Mauve CP H2a(4) Unhinged CP Cat \$125 (1)	100
349	**	3d Brown P14 Line CP H3b Unhinged Centred left CP Cat \$200 (1)	150
350	**	4d Bright Yellow CP H4d(1) Unhinged (1)	100
351	**	5d Deep Brown P14x14 1/2 CP H5b(1) Unhinged (1)	125
352	**	5d Red-Brown P14x14 1/2 CP H5b(2) Deep Red-Brown Unhinged CP Cat \$150 (1)	125
353	**	6d Carmine P14x14 1/2 CP H6b(1) Unhinged CP Cat \$300 (1)	250
354	**	6d Deep Carmine P14x14 1/2 CP H6b(2) Unhinged CP Cat \$300 (1)	250

## SEPTEMBER—OCTOBER OFFERS (cont.)

355	**	8d Indigo-Blue P14x14 1/2 CP H7b(1) Unhinged (1)	100
		<b><u>1909 KING EDWARD VII OFFICIALS</u></b>	
356	**	1/2d Yellow-Green CP HO1a(2) Yellow-Green Unhinged (1)	60
357	**	3d Chestnut P14x14 1/2 CP HO3a(1) Unhinged (1)	150
358	**	6d Carmine CP HO6b Unhinged CP Cat \$150 (1)	125
359	**	8d Deep Bright Blue P14x13 1/2 CP HO7c(1) Unhinged (1)	100
		<b><u>1913 AUCKLAND EXHIBITION</u></b>	
360	U	Set 1/2d to 6d CP S5a/S8a Fine Used CP Cat \$1610 (4)	1250
361	**	Set 1/2d to 6d CP S5a/S8a Unhinged CP Cat \$2080 (4)	1500
		<b><u>1915 KGV RECESS</u></b>	
362	**	1 1/2d to 1/- Simplified Set Unhinged Cat \$850 (15)	500
		<b><u>1915 KGV RECESS OFFICIALS</u></b>	
363	**	1/- Orange-Vermilion P14x14 1/2 CP KO12b(2) Unhinged (1)	100
364	**	3d Chocolate Brown P14x14 1/2 CP KO4b(2) Unhinged (1)	40
365	**	4d Dull Violet P14x13 1/2 CP KO5d Unhinged (1)	100
366	**	6d Dull Carmine P14x13 1/2 CP KO8a(4) Unhinged (1)	40
367	**	8d Red-Brown CP KO10d Unhinged (1)	400
368	**	9d Sage Green CP KO11a Unhinged (1)	200
		<b><u>1915 KGV SURFACE</u></b>	
369	**	Set 1/2d to 3d Simplified Set Unhinged (5)	100
		<b><u>1920 VICTORY</u></b>	
370	**	Set 1/2d to 1/- CP S9a/S15a Unhinged CP Cat \$455 (7)	350
		<b><u>1925 DUNEDIN EXHIBITION</u></b>	
371	**	SET 1/2d to 4d CP S17a/17c Unhinged CP Cat \$172 (3)	150
		<b><u>1926 ADMIRALS</u></b>	
372	**	2/- Blue Cowan Paper CP K20b(1) Unhinged CP Cat \$450 (1)	350
373	**	3/- Mauve Jones Paper CP K21a Unhinged CP Cat \$650 (1)	500
374	**	OFFICIAL 2/- Blue CP KO20b(1) Unhinged CP Cat \$675 (1)	500
		<b><u>1935 PICTORIAL OFFICIALS</u></b>	
375	**	SET 1/2d to 2/- Simplified Unhinged CP Cat \$1070 (13)	750
		<b><u>1938 KGV I</u></b>	
376	**	2d/1 1/d Chocolate CP M5a(z) Bottom Selvedge Block of 4 with Reinserted '2' Unhinged. CP Cat \$1650 (4)	750
		<b><u>1938 KGV I OFFICIALS</u></b>	
377	**	SET 1/2d to 2/- Simplified Unhinged Cat \$400 (14)	300
		<b><u>1940 CENTENNIAL</u></b>	
378	**	OFFICIALS 1/2d to 1/- Set Complete Unhinged Cat \$425 (11)	300



## SEPTEMBER—OCTOBER OFFERS (cont.)

### **1953-9 QUEEN ELIZABETH**

379	**	10/- Blue Plate 3 Corner Block of 4 CP N16a Unhinged CP Cat \$1300 (4)	750
380	**	3/- Green CP N14a Plate 2 Corner Block of 4 Unhinged CP Cat \$225 (4)	150
381	**	5/- Carmine Plate 1 Corner Block of 4 CP N15a Unhinged CP Cat \$500 (4)	300

### **2000 ONWARDS**

382	**	2004 \$2 Olympic Games CP S918a(y) Strip of 4 with the first 3 values normal and the 4th with an Inverted value. Fine & Very Scarce. CP Cat \$5000 (4)	3000
-----	----	--	------

### **HEALTH**

383	*/**	1929 1d Nurse CP T1a (SG 544) in a Bottom Right Corner Block of 4 with 2 stamps Mint, 4x Unhinged. Fine Block CP Cat \$300 (6)	200
384	C	1929 1d Nurse CP T1a (SG 544) tied on Cover by MANGAMUTU 23 SP 30 cancel to USA. Minor stain on the front (1)	75
385	U	1930 1d Nurse CP T2a (SG 545) Block of 4 Very Good Used dated 1 MY 31. CP Cat \$360+ (4)	200
386	*/**	1931 Red & Blue Boys CP T3a/4a (SG 546/47) in Blocks of 4 (both with 1 stamp hinged, the rest unhinged) Both blocks with light gum ageing. CP Cat \$3590 (8)	1000
387	**	1931 Red & Blue Boys CP T3a/4a Fine Unhinged CP Cat \$1050 (2)	750
388	*/**	1932 1d Hygeia CP T4a (SG 552) in a Block of 8 in Deep Carmine. The top 4 stamps lightly hinged. CP Cat \$680 (8)	350
389	**	1932 1d Hygeia CP T4a (SG 552) in a Top Left-hand Corner Block of 4 Unhinged - 2x stamps with a faint tone. CP Cat \$480 (4)	250
390	C	1932 1d Hygeia CP T4a (SG 552) on Plain First Day Cover Posted at Highfield. Thee cover has minor staining. Scarce Cat \$600 (1)	300
391	C	1932 1d Hygeia CP T4a (SG 552) tied on Cover to Australia. Posted at Wellington. Good commercial usage (1)	100
392	C	1932 1d Hygeia CP T4a (SG 552) tied on Plain Cover tied by MANOR PLACE 17 NO 32 (Dated One Day before the First Day of Issue). Has R Tregea, GPO Box 166, Dunedin handstamp on flap. Fine & Very Scarce Pre First Day Cover. (1)	500
393	*/**	1933 1d Pathway CP T5a (SG 553) in a Block of 8 with the top 4 stamps lightly hinged. Faint perf tone. CP Cat \$360 (8)	180
394	C	1933 1d Pathway CP T5a (SG 553) tied on Cover to Australia. Posted at Te Aro. (1)	100
395	C	1933 1d Pathway CP T5a (SG 553) tied on Plain First Day Cover Posted at Palmerston North and addressed to 'Postmaster, Masterton'. Has blue 'First Day of Issue' cachet at top left. The stamp has perf staining. (1)	300
396	**	1934 1d Crusader CP T6a (SG 555) in a Left-hand Corner Plate 1 Block of 4 Unhinged CP Cat \$500 (4)	300
397	C	1934 1d Crusader CP T6a (SG 555) tied on Cover by Oamaru machine cancel to Dunedin (1)	100
398	C	1935 1d Keyhole CP T7a on Illustrated First Day Cover Jones H35.1B(a) A H Bergen Cover. Rated 7 Scarce. Fine condition (1)	150
399	C	1935 1d Keyhole CP T7a on Illustrated First Day Cover Jones H35.1C F E McKenzie Printed Cover. Rated 8. Fine & Scarce (1)	200

## SEPTEMBER—OCTOBER OFFERS (cont.)

400	C	1936 1d Lifebouy CP T8a on Illustrated First Day Cover Jones H36.1P J F Johnson Cover. Rated 8. Scarce (1)	200
401	C	1937 1d Hiker CP T9a (SG 602) on Illustrated First Day Cover Jones H37.1E (1) in Blue Gilbert H Wood Cover. Rated 6 Scarce (1)	100
402	C	1937 1d Hiker CP T9a (SG 602) on Illustrated First Day Cover Jones H37.1E (12) in Brown Produced by Gilbert H Wood. Rated 6. Minor perf staining (1)	100
403	C	1937 1d Hiker CP T9a (SG 602) on Illustrated First Day Cover Jones H37.1E (9) in Purple Printed by Gilbert H Wood. Rated 6. Scarce (1)	100
404	C	1937 1d Hiker CP T9a (SG 602) on Illustrated First Day Cover Jones H37.1L Rated 5 (1)	50
405	C	1937 1d Hiker CP T9a (SG 602) on Illustrated First Day Cover Jones H37.1M (1) in Green/Blue Produced by Taranaki Philatelic Society. Rated 5 (1)	75
406	C	1937 1d Hiker CP T9a (SG 602) on Illustrated First Day Cover Jones H37.1M (2) in Green/Red Produced by Taranaki Philatelic Society. Rated 6 Scarce (1)	100
407	C	1937 1d Hiker CP T9a (SG 602) on Illustrated First Day Cover Jones H37.1VAB (1) Kiwi Design Produced by the ENZED Stamp Co Rated 6 Scarce (1)	150
408	C	1937 1d Hiker CP T9a (SG 602) on Illustrated First Day Cover Jones H37.1VBB with Tuatara Design. Rated 6 Scarce (1)	150
409	C	1937 1d Hiker CP T9a (SG 602) on Illustrated First Day Cover Jones H37.1VCB with Maori King Cachet. Rated 6 Scarce (1)	150
410	C	1937 1d Hiker CP T9a (SG 602) on Illustrated First Day Cover Jones H37.1VDB with the Punakaiki Cachet. Rated 6 Scarce (1)	150
411	C	1937 1d Hiker Cp T9a (SG 602) on Illustrated First Day Cover Jones H37.1VFB with the Moa Cachet. Rated 6. Scarce (1)	150
412	C	1937 1d Hiker CP T9a (SG 602) tied on Illustrated First Day Cover Jones H37.1AF Produced by Colin J Earle. Rated 9 Very Scarce (1)	250
413	C	1937 1d Hiker CP T9a (SG 602) tied on Illustrated First Day Cover Jones H37.1AG Produced by Claude Downes. Rated 10. Fine & Rare (1)	350
414	C	1937 1d Hiker CP T9a (SG 602) tied on Illustrated First Day Cover Jones H37.1E (14) Produced by Gilbert H Wood. Light ageing Scarce (1)	100
415	C	1937 1d Hiker CP T9a (SG 602) tied on Illustrated First Day Cover Jones H37.1I Produced by John F Johnson. Rated 8. Scarce (1)	200
416	C	1937 1d Hiker CP T9a (SG 602) tied on Illustrated First Day Cover Jones H37.1SA Printed by McLeod and Slade. Rated 8 Scarce (1)	200
417	C	1938 1d Children CP T10a (SG 610) on Illustrated First Day Cover Jones H38.1V Herbie D Mullon Cover. Rated 9. Very Scarce (1)	250
418	C	1939 Beachball CP T11a/b (SG 611/12) on Illustrated First Day Cover Jones H39.1H Produced by David Barrett. Rated 9. Very Scarce (1)	250
419	C	1940 Beachball CP T12a/b (SG 626/27) on Printed 'South Sea Stamp Service' First Day Cover. Has 'Belle of the Village' cachet. Unlisted Cover (1)	250
420	C	1942 Swing CP T14a/b (SG 634/35) on Illustrated Censored First Day Cover to USA. Jones H42.1D. Rated 7 Scarce (1)	175
421	C	1944 (DE) Long Printed 'King George V Memorial Health Camp - Otaki' Cover with '44 1d Princess tied by Wellington cds. (1)	50

## SEPTEMBER—OCTOBER OFFERS (cont.)

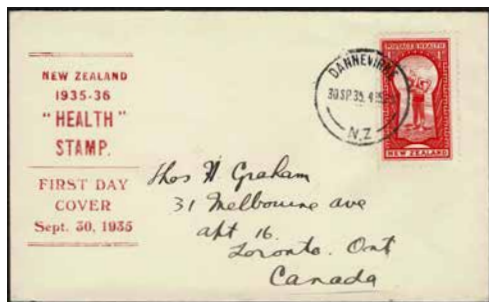
422	C	1944 Princesses CP T16a/b (SG 663/64) on Illustrated First Day Cover. Jones H44.1K Rated 9. Very Scarce (1)	250
423	C	1944 Princesses CP T16a/b (SG 663/64) tied on Illustrated First Day Cover in 157x110mm Unlisted Size with Blocks of 4 on Registered to Canada. (1)	250
424	C	1944 Princesses CP T16a/b (SG 663/64) tied on Illustrated First Day Cover Jones H44.1J Produced by David L Barrett to Canada. Rated 7. Scarce (1)	150
425	C	1945 Peter Pan CP T17a/b (SG 665/66) on Illustrated First Day Cover Jones H45.1M Rated 9. Minor ageing. Very Scarce (1)	250
426	C	1945 Peter Pan CP T17a/b (SG 665/66) on Illustrated First Day Cover Jones H45.1NA to Canada. Rated 7. Scarce (1)	150
427	C	1945 Peter Pan CP T17a/b (SG 665/66) on Illustrated First Day Cover Jones H45.1NB Produced by David L Barrett. Rated 7. Minor creasing Scarce (1)	150
428	C	1945 Peter Pan CP T17a/b (SG 665/66) on Illustrated First Day Cover Jones H45.1RB(2) Produced by Ivan G Smart. Rated 9 Very Scarce (1)	250
429	C	1945 Peter Pan CP T17a/b (SG 665/66) on Unlisted Illustrated First Day Cover with 'New Zealand/Health Campaign/1945' cachet Posted at Auckland. Rare (1)	300
430	C	1945 Peter Pan CP T17a/b (SG 665/66) tied on Illustrated First Day Cover Jones H45.1Q Produced by The Collectors' Club Rated 9 Very Scarce (1)	250
431	C	1945 Peter Pan CP T17a/b (SG 665/66) tied on Printed S R Wilkes Illustrated First Day Card with a Girl & Boy with Dog in Red. Unlisted & Very Scarce (1)	300
432	C	19455 Peter Pan CP T17a/b (SG 665/66) on Illustrated First Day Cover Jones H451U (a) Produced by Robert J Brown. Rated 9 Very Scarce (1)	300
433	C	1946 Soldier CP T18a/b (SG 678/79) on Illustrated First Day Cover Jones H46.1L Produced by Keith Collinson. Rated 6 Scarce (1)	100
434	C	1946 Soldier CP T18a/b (SG 678/79) on Illustrated First Day Cover Jones H46.10 (a) Produced by David L Barrett. Rated 8 Scarce (1)	200
435	C	1946 Soldier CP T18a/b (SG 678/79) on Illustrated First Day Cover Jones H46.10(b) Produced by David L Barrett. Rated 8 Scarce (1)	200
436	C	1946 Soldier CP T18a/b (SG 678/79) on Illustrated First Day Cover Jones H46.1BD Rated 5 (1)	50
437	C	1946 Soldier CP T18a/b (SG 678/79) on Illustrated First Day Cover Jones H46.1DAA Registered to USA. Rated 7 Scarce (1)	150
438	C	1946 Soldier CP T18a/b (SG 678/79) on Illustrated First Day Cover Jones H46.1DB (1)	50
439	C	1946 Soldier CP T18a/b (SG 678/79) on Illustrated First Day Cover Jones H46.1E(1) Produced by the Pinnacle Stamp Company. Rated 6 Scarce (1)	100
440	C	1946 Soldier CP T18a/b (SG 678/79) on Illustrated First Day Cover Jones H46.1E(2) produced by the Pinnacle Stamp Company. Rated 6 Scarce (1)	100
441	C	1946 Soldier CP T18a/b (SG 678/79) on Illustrated First Day Cover Jones H46.1G Produced by John F Johnson. Rated 7 Scarce (1)	150
442	C	1946 Soldier CP T18a/b (SG 678/79) on Illustrated First Day Cover Jones H46.1HA unaddressed (1)	50
443	C	1946 Soldier CP T18a/b (SG 678/79) on Illustrated First Day Cover Jones H46.1J(a) Produced by John M Giles (1)	50

## SEPTEMBER—OCTOBER OFFERS (cont.)

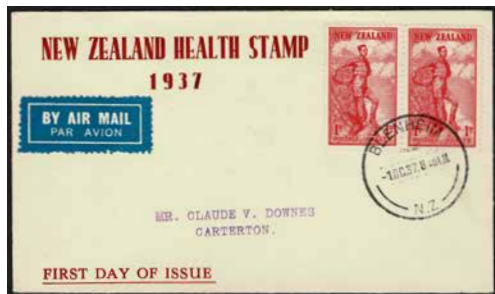
444	C	1946 Soldier CP T18a/b (SG 678/79) on Illustrated First Day Cover Jones H46.1K(b) Produced by Keith Collinson. Registered to Canada. Rated 7 Minor age (1)	150
445	C	1946 Soldier CP T18a/b (SG 678/79) on Illustrated First Day Cover Jones H46.1PA Produced by Doug Tibble. Rated 10 Fine & Rare (1)	350
446	C	1946 Soldier CP T18a/b (SG 678/79) on Illustrated First Day Cover Jones H46.1R (1)	50
447	C	1946 Soldier CP T18a/b (SG 678/79) on Illustrated First Day Cover similar to H46.1HA but a different size 165x109mm. The cover has a couple of tears on the base (1)	100
448	C	1946 Soldier CP T18a/b (SG 678/79) on Illustrated First Day Cover similar to Jones H46.1DB but an unlisted size - 175x102mm Has light ageing and slight creasing (1)	150
449	C	1946 Soldier CP T18a/b (SG 678/79) on Illustrated Specimen First Day Cover Posted at Paeroa. Jones H46.1C (2) Produced by Pim & Co. Rated 7 Scarce (1)	150
450	C	1947 Eros CP T19a/b (SG 690/91) on Illustrated First Day Cover Jones H47.1DA(1) Minor staining (1)	50
451	C	1947 Eros CP T19a/b (SG 690/91) on Illustrated First Day Cover Jones H47.1HA(1) (a) (1)	40
452	C	1947 Eros CP T19a/b (SG 690/91) on Illustrated First Day Cover Jones H47.1HB (1)	40
453	C	1947 Eros CP T19a/b (SG 690/91) on Illustrated First Day Cover Jones H47.1JA Produced by David L Barrett. Rated 7 Scarce (1)	150
454	C	1947 Eros CP T19a/b (SG 690/91) on Illustrated First Day Cover Jones H47/1DB (1)	50
455	C	1947 Eros CP T19a/b (SG 690/91) on Illustrated First Day Cover Rated 7 Scarce (1)	150
456	C	1947 Eros CP T19a/b (SG 690/91) on Illustrated First Day Cover similar to H43.1C(1) in Brown but the year obliterated out. (1)	100
457	C	1947 Eros CP T19a/b (SG 690/91) on Illustrated First Day Cover similar to H47.1C but an Unlisted Size 229x102mm. Minor prf staining. Very Scarce (1)	250
458	C	1947 Eros CP T19a/b (SG 690/91) on Printed Illustrated First Day Card Jones H47.1K(1) Produced by Pinnacle Stamp Company. Rated 7 (1)	150
459	C	1947 Eros CP T19a/b (SG 690/91) tied on HK Wilson Real Photo Postcard showing a Plane over a Map of NZ plus a 'First Day Cover' cachet. Fine & Very Scarce (1)	250
460	C	1948 Health Camp CP T18a/b (SG 696/97) on Illustrated First Day Cover Jones H48.1AA with a Double Printed Cachet. Unlisted Fine & Very Scarce (1)	200
461	C	1948 Health Camp CP T20a/b (SG 696/97) on Illustrated First Day Cover. ones H48.1R unaddressed Rated 9 Very Scarce (1)	250
462	C	1949 Nurse CP T21a/b (SG 698/99) on Illustrated First Day Cover Jones H49.1L Produced by David L Barrett Rated 8 to Sweden. (1)	200
463	C	1950 Princess Elizabeth CP T22a/b (SG 701/02) tied on Illustrated First Day Cover. Jones H50.1J Produced by Jim Hanna. Rated 9 Very Scarce (1)	250
464	C	1951 Yachting CP T23a/b (SG 708/09) tied on Illustrated First Day Cover Jones H51.1Q(a) Produced by David L Barrett. Rated 8 Scarce (1)	200
465	C	1951 Yachting CP T23a/b (SG 708/09) tied on Illustrated First Day Cover Jones H51.1Q(b) produced by David L Barrett. Rated 8 Scarce (1)	200
466	C	1955 Medallion CP T27a/c (SG 742/44) tied on Illustrated First Day Cover Jones H55.1G produced by G Clark, Omakau. Rated 10. Very Scarce (1)	300



395



399



413



417



429



432

## SEPTEMBER—OCTOBER OFFERS (cont.)

467	U	1957 Beach Scenes Miniature Sheet Pair CP TM29a/b (SG MS762b) Fine Used CP Cat \$100 (2)	80
468	U	1958 Brigade Children Miniature Pair CP TM30a/b (SG MS765a) Fine Used CP Cat \$110 (2)	80
469	**	1959 2d Bird (Tete) CP T31a in a Top left-hand Corner Block of 4 with the top 4 stamps showing a Triple Horizontal Doctor Blade flaw Unhinged (8)	100
470	**	1959 3d Poaka CP TM31b(z) The top part of the Miniature Sheet (3 stamps) with the Red Colour Omitted Unhinged (3)	1000
471	U	1959 Birds Miniature Sheet Pair CP TM31a/b (SG MS777c) Fine Used CP Cat \$110 (2)	80
472	U	1960 Birds Miniature Sheet Pair CP TM32c/d (SG MS804b) Fine Used CP Cat \$140 (2)	100
473	**	1961 Birds Miniature Sheet Pair CP TM33a/b (SG MS807a) Fine Used CP Cat \$120 (2)	90
474	U	1962 Birds Miniature Sheet Pair CP TM34a/b (SG MS813b) Fine Used CP Cat \$130 (2)	100
475	U	1963 Prince Andrew Miniature Sheet Pair CP TM35a/b (SG MS816b) Fine Used CP Cat \$110 (3)	80
476	*	1964 2 1/2d Tarapunga CP T36a(x) with a Major Red Colour Shift Upwards Good Mint CP Cat \$150 (1)	75
477	**	1964 2 1/2d Tarapunga Miniature Sheet CP TM36a with blue Colour Shift resulting in partial missing bird's head Unhinged. Nice Error (1)	500
478	U	1964 Bird Miniature Sheet Pair CP TM36a/b (SG 823b) Fine Used CP Cat \$220 (2)	175
479	**	1965 3d Kaka CP T37a (SG 831) with a Striking Dryprint Error Unhinged with a normal for comparison (2)	250
480	U	1965 Birds Miniature Sheet Pair CP TM37a/b (SG MS832c) Fine Used with Otaki Health Camp cancels. CP Cat \$130 (2)	100
481	U	1966 3d Bellbird CP TM38a (SG 839) with Green Colour Shift upwards Used. The stamp has a blunt top right corner (1)	50
482	**	1966 3d Bellbird Miniature Sheet CP TM38a (SG MS841) showing a Major Dryprint Error on the top 3 stamps Unhinged (1)	750
483	**	1966 3d Bellbird Miniature Sheet CP TM38a(y) showing Triple Perforations Error on the first two stamps of each row. Also has two vertical perforations in the left-hand selvedge Unhinged. Nice Error Sheet (1)	1000
484	*	1966 4d Weka Miniature Sheet CP TM38b with a fine Pre-printing crease diagonally on 3 stamps. (1)	250
485	U	1967 Rugby Miniature Sheet Pair CP TM39a/b (SG MS869) Fine Used. CP Cat \$100 (2)	80
486	**	1968 2 1/2c Olympic CP T40a with a Full Colour Offset Unhinged (1)	1000
487	**	1968 3c Olympics CP T40b with a Full Colour Offset Unhinged (1)	1000
488	U	1968 Olympics Miniature Sheet Pair CP TM40a/b (SG MS889) Fine Used. CP Cat \$100 (2)	80
489	**	1969 2 1/2c Cricket CP T41a (SG 899) Top Vertical Selvedge Strip of 5 with a Pre-printing paper crease resulting in an upwards Yellow Colour Shift Error Unhinged (5)	250
490	U	1970 Netball/Football Miniature Sheet Pair CP TM42a/b (SG MS942) Fine Used CP Cat \$100 (2)	80
491	**	1971 3c Hockey CP T43a(z) with an Offset Unhinged CP Cat \$250 (1)	150

## SEPTEMBER—OCTOBER OFFERS (cont.)

492	**	1971 3c Hockey Miniature Sheet with a large 'Yellow Semi-constant' flaw around the hockey ball in R2/1 of the sheet Unhinged (1)	25
493	**	1973 4c Prince Edward CP T45b Bottom Corner Block of 4 with the bottom left stamp has a Black printing flaw on the Prince's head Unhinged (4)	50
494	C	1974 Children/Animals Miniature Sheet CP TM46 (SG MS1057) Fine Used CP Cat \$100 (1)	80
495	**	1975 5c Boy & Duck CP T47c Plate 1B Block of 6 with a Yellow Colour Shift downwards Unhinged. The block has a light gum age (6)	100
496	**	1977 Health Miniature Sheet CP TM49 (SG MS 1152) with Red & Blue Colour Shifts affecting 4 stamps of the sheet Unhinged (1)	1500
497	**	1977 Health Miniature Sheet CP TM49 (SG MS1152) Misgullotined Sheet with the left margin trimmed closer. Fine Error Sheet (1)	500
498	**	1984 Horses CP T56b(v) Pair with Orange Colour Omitted Unhinged CP Cat \$900 (2)	500
499	**	1996 40c Teddy Bear Error CP T68a (SG 2000a) in a Value Block of 4 Unhinged CP Cat \$5000 (4)	3000
500	**	1998 \$.45 Water Safety Blue/White Booklet with Waiheke Island cancel on the inside cover (1)	50
501	**	1998 \$.45 Water Safety Gisborne Health Camp Booklet (1)	50
<b><u>LIFE INSURANCE</u></b>			
502	**	1902 1d Blue P11 Watermark Sideways CP X22h(1) Unhinged Scarce (1)	300
503	**	1903 1/2d Bright Purple P11 Sideways Watermark CP X1g(1) Unhinged. Centred left. Scarce CP Cat \$500 (1)	400
<b><u>POSTAGE DUES</u></b>			
504	**	1902 1/2d Red/Green P11 No Watermark Bottom Selvedge Block of 4 with a Vertical Double Perforations on the right-hand stamps Unhinged. CP Y15a(z) Has minor ageing. CP Cat \$380+ (4)	250
<b><u>POSTAL FISCALS</u></b>			
505	**	1940 3/6 on 3/6 Arms CP Z53a Single Watermark Unhinged CP Cat \$165 (1)	100
506	**	1940 5/6 on 5/6 Lilac CP Z54c Unhinged CP Cat \$180 (1)	150
507	**	1940 Arms 11/- on 11/- Yellow CP Z55b Unhinged CP Cat \$375 (1)	300
508	**	1940 Arms 22/- on 22/- Red CP Z56b Unhinged CP Cat \$900 (1)	750
509	**	1940 Arms 35/- on 35/- Orange-Yellow CP Z57a Unhinged CP Cat \$1525 (1)	1250
510	**	OFFICIALS 1933 Arms 5/- Vertical Overprint CP ZO33a Unhinged CP Cat \$1100 (1)	800

**SPECIAL OFFER**  
**PURCHASE 3 OR MORE ITEMS FROM THIS LIST**  
**AND RECEIVE A 10% DISCOUNT**





499



482



428



430

The CP Newsletter is a confidential source of information for philatelists and collectors. Published by Campbell Paterson, Auckland New Zealand. ISSN 1172-0166

All lots offered in this newsletter are unconditionally guaranteed as genuine and as described. They are offered subject unsold and will be sent on approval to known clients, Postage is additional. GST not included (NZ only).

The information contained in this newsletter is private to subscribers and unauthorised reproduction is expressly forbidden.

Postal orders to PO Box 99988, Newmarket, Auckland 1149, New Zealand.

To obtain more detailed descriptions of the material offered in this newsletter or to place orders, phone us 0800 788 778 or Fax 64-9-522 0313 or Email: [service@campbellpaterson.co.nz](mailto:service@campbellpaterson.co.nz)

Our website is: [www.campbellpaterson.co.nz](http://www.campbellpaterson.co.nz)

